



**Lochaline Street, Hammersmith, W6**

3 Bedrooms

**£2,832.50 per month**



LONDON ESTATES



Three double bedrooms | Three bathrooms | Walking distance to tube station | Newly renovated | High Spec Finish | Dishwasher

Available Date: 18<sup>th</sup> April 2021

EPC Rating: C | Council Tax: E - £2,832.50 per month



LONDON ESTATES

## Lochaline Street

Approx. Gross Internal Area

114 Sq M - 1227 Sq Ft

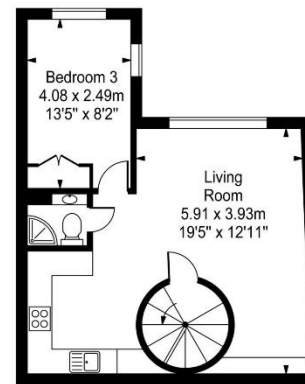
(Including Eaves Storage)

Key :

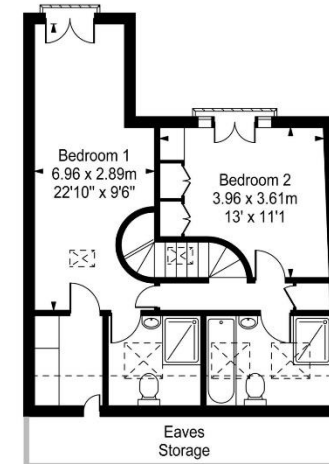
--- = Reduced headroom below 1.5m / 5'0"



Ground Floor  
Entrance



First Floor



Second Floor

Every attempt is made to assure accuracy, however measurements are approximate and for illustrative purposes only. Not to scale.  
Floor plan by [www.frameworkphotos.co.uk](http://www.frameworkphotos.co.uk)