



Coningsby Road, Ealing, W5

3 Bedroom House

£835,000 Freehold



LONDON ESTATES



OPEN PLAN LIVING | FULLY REFURBISHED | UNDERFLOOR HEATING IN BATHROOMS | GOOD STORAGE | STORAGE CELLAR | OUTSIDE SPACE

EPC Rating: D | Council Tax Band: E



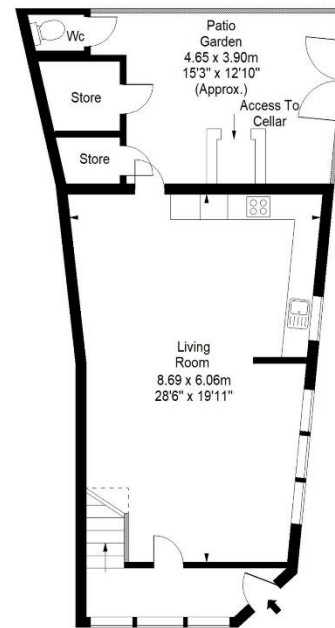
LONDON ESTATES

Coningsby Road

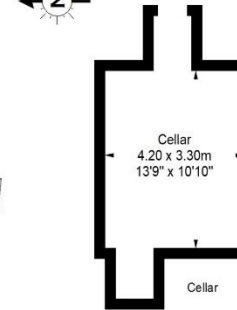
Approx. Gross Internal Area
111 Sq M - 1194 Sq Ft

Cellar 16 Sq M - 172 Sq Ft
Outbuildings: 5.50 Sq M - 59 Sq Ft

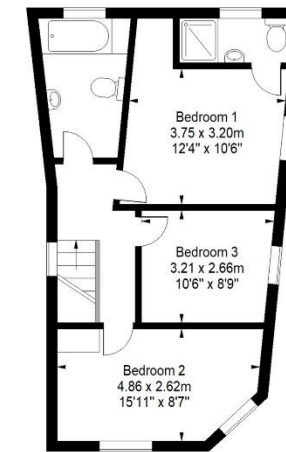
Total Approx. Gross Internal Area
132.50 Sq M - 1425 Sq Ft



Ground Floor



Cellar



First Floor

Every attempt is made to assure accuracy, however measurements are approximate and for illustrative purposes only. Not to scale.
Floor plan by www.frameworkphotos.co.uk