



Lavender Hill, Clapham, SW11

4 Bedrooms

£4,200 per month



LONDON ESTATES



LOW COUNCIL TAX | AGENCY-MANAGED PROPERTY | SPACIOUS
BEDROOMS | THREE BATHROOMS | SPLIT OVER THREE

Available Date: 17th January 2025

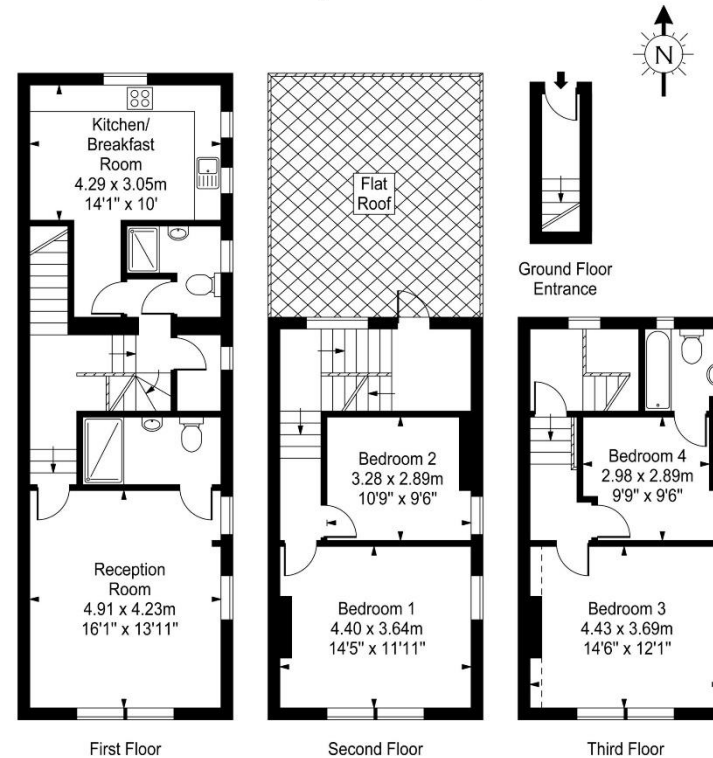
EPC Rating: E | Council Tax: C - £4,200 per month



LONDON ESTATES

Lavender Hill

Approx. Gross Internal Area
140 Sq M - 1506 Sq Ft



Every attempt is made to assure accuracy, however
measurements are approximate and for illustrative purposes only. Not to scale.
Floor plan by www.frameworkphotos.co.uk