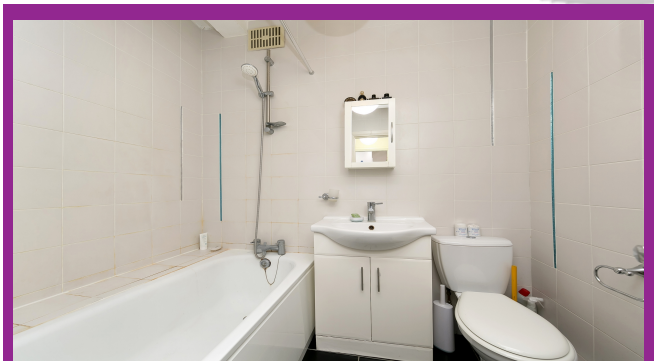




LONDON ESTATES

**Kings Court, King Street, Hammersmith, W6**

£1050.00 per month

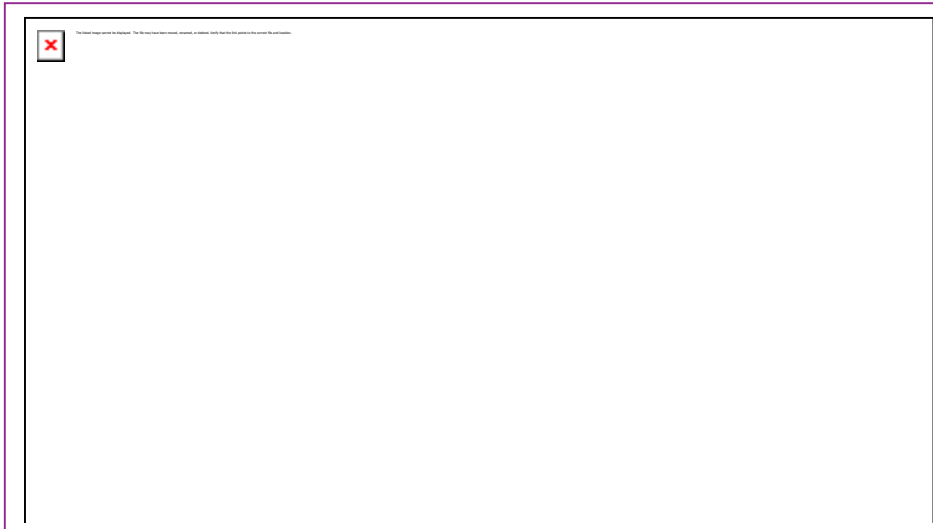


🛏 0 🚿 1 🛋 1 🚗 N

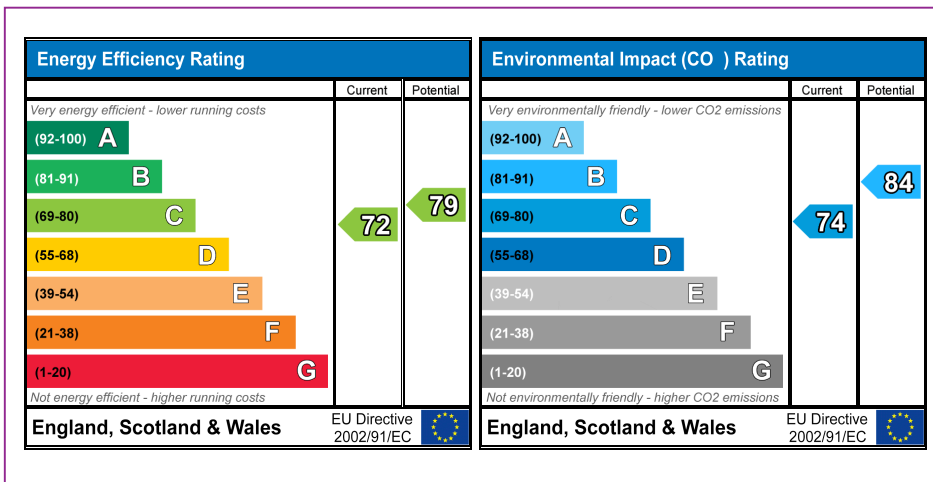
**TO LET**



## LONDON ESTATES



- Heating included
- Separate kitchen
- Excellent location
- Close to Ravenscourt Park
- Secure entry phone system



The graph shows the current energy efficiency of your home. The higher the rating the lower your fuel bills are likely to be. The potential rating shows the effect of undertaking the recommendations on page 3. The average energy efficiency rating for dwelling in England and Wales is band D (rating 60).

**Available Date:** 17th August, 2019

**Council Tax:** B

**Cost:** £842

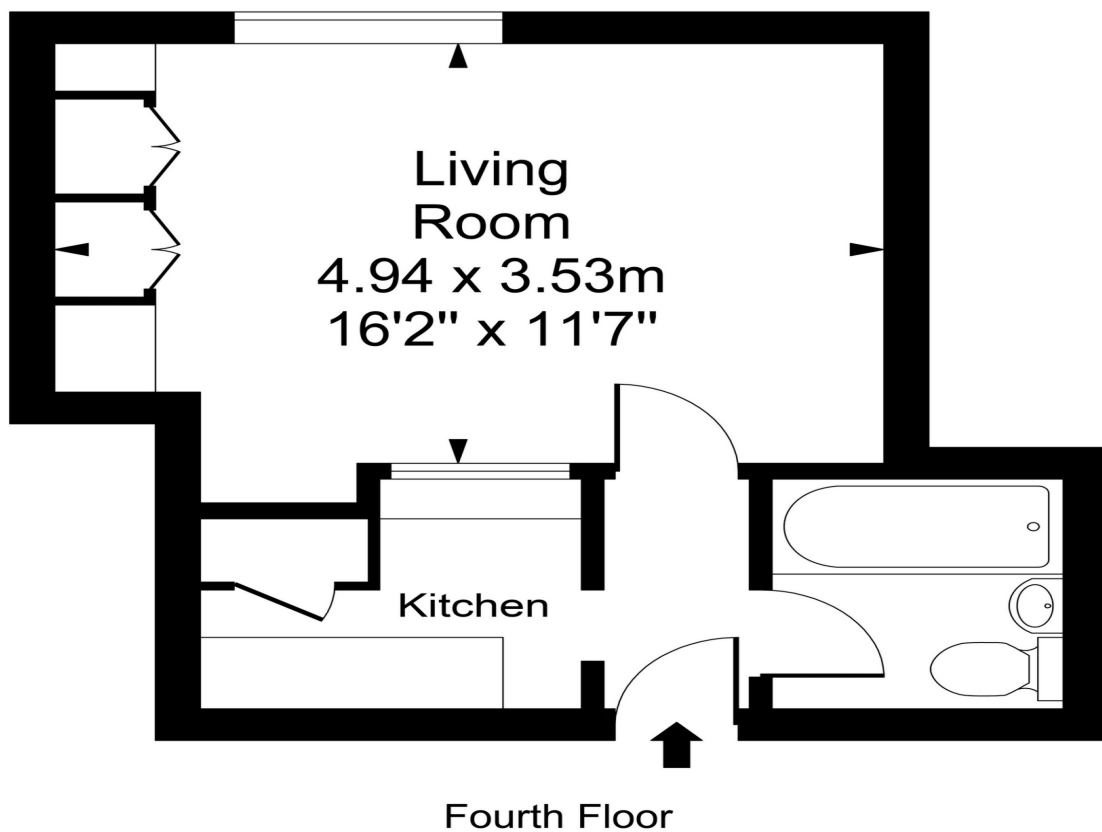
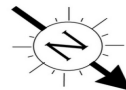




LONDON ESTATES

## Kings Court

Approx. Gross Internal Area  
27 Sq M - 295 Sq Ft



Every attempt is made to assure accuracy, however  
measurements are approximate and for illustrative purposes only. Not to scale.  
Floor plan by [www.frameworkphotos.co.uk](http://www.frameworkphotos.co.uk)