



Greyhound Road, Hammersmith, W6

2 Bedrooms

£2,200 per month



LONDON ESTATES



LOWER GROUND FLOOR | TWO BATHROOMS (ONE EN-SUITE) | SEPARATE KITCHEN | PRIVATE GARDEN | AMPLE STORAGE | GREAT LOCATION

Available Date: 5th June 2023

EPC Rating: C | Council Tax: C - £2,200 per month

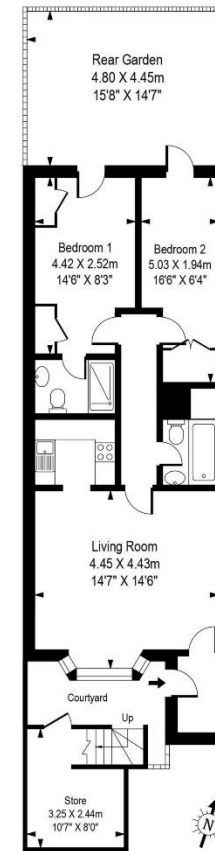


LONDON ESTATES

175 Greyhound Road

Approx. Gross Internal Area

55 Sq M - 592 Sq Ft
(Excluding Store)



Lower Ground Floor

Every attempt is made to assure accuracy, however measurements are approximate and for illustrative purposes only. Not to scale.
Floor plan by www.frameworkphotos.co.uk