



Almeric Road, Battersea, SW11

3 Bedrooms

£3,000 per month



LONDON ESTATES



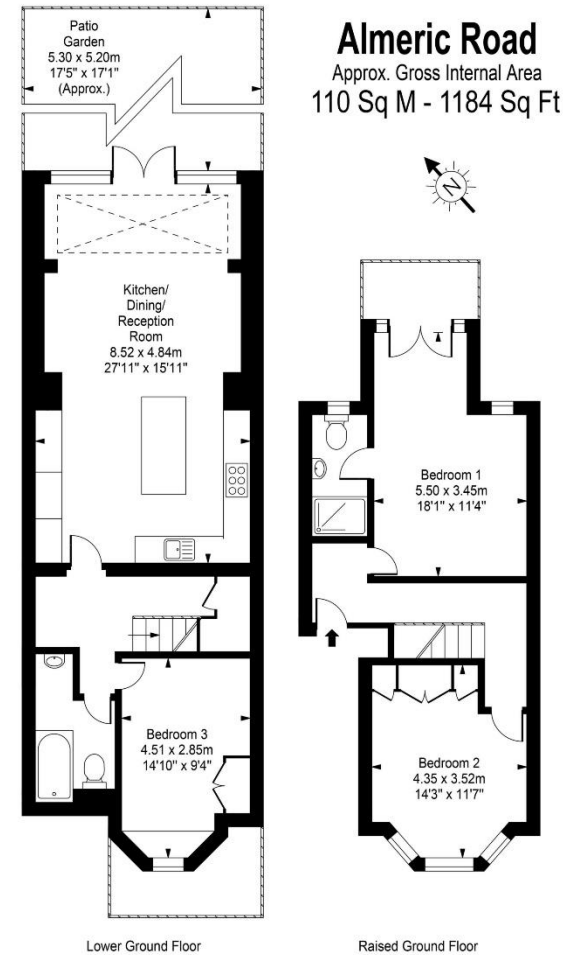
Three Double Bedrooms | Private Garden | Excellent Location | Good Transport Links | Excellent Local Amenities | Two bathrooms

Available Date: 17th September 2021

EPC Rating: D | Council Tax: F - £3,000 per month



LONDON ESTATES



Every attempt is made to assure accuracy, however measurements are approximate and for illustrative purposes only. Not to scale.
Floor plan by www.frameworkphotos.co.uk