



Acton Lane, Chiswick, W4

2 Bedrooms

£1,725 per month



LONDON ESTATES



Council Tax Included | Two Double Bedrooms | Off Street Parking | En-Suit Bathroom | Fully Equipped Kitchen | Under Floor Heating

Available Date: 26th February 2022

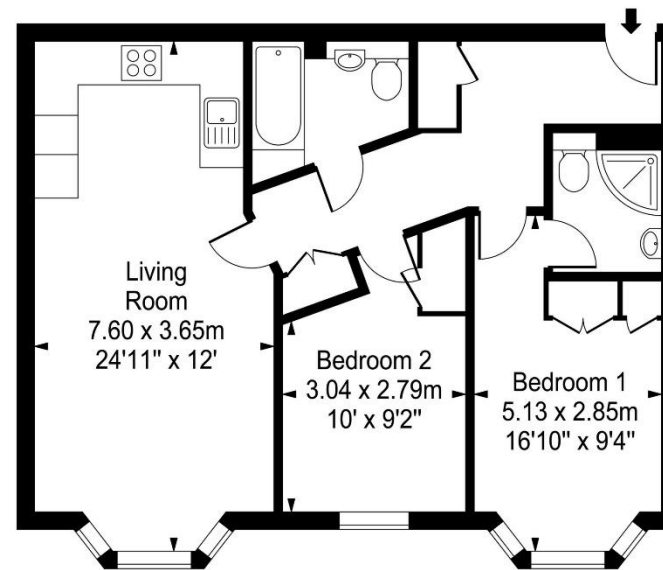
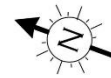
EPC Rating: C | Council Tax: E - £1,725 per month



LONDON ESTATES

Acton Lane

Approx. Gross Internal Area
71.20 Sq M - 766 Sq Ft



Ground Floor

Every attempt is made to assure accuracy, however measurements are approximate and for illustrative purposes only. Not to scale.
Floor plan by www.frameworkphotos.co.uk