



**Hanger Green, Ealing, W5**

Haymills Court | 2 Bedrooms

**£1,850 per month**



LONDON ESTATES



BRIGHT AND SPACIOUS | WOODEN FLOORING | BUILT-IN TV | DOUBLE GLAZING | GREAT TRANSPORT LINKS

Available Date: 20<sup>th</sup> January 2025

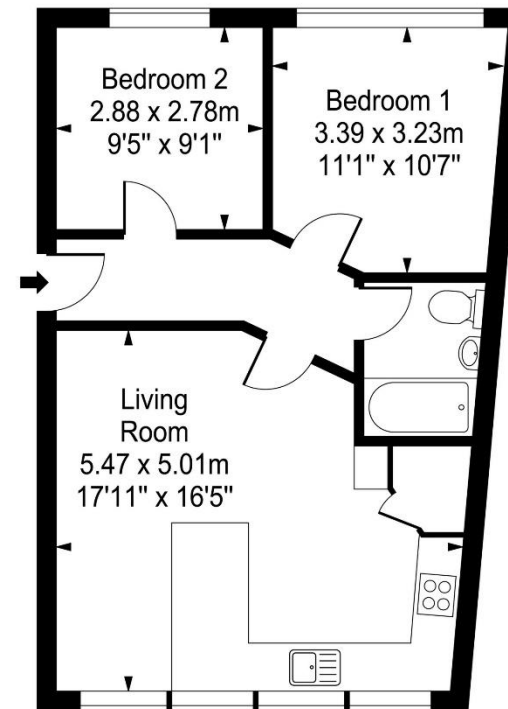
EPC Rating: E | Council Tax: D - £1,850 per month



LONDON ESTATES

## Haymills Court

Approx. Gross Internal Area  
54 Sq M - 581 Sq Ft



Second Floor

Every attempt is made to assure accuracy, however measurements are approximate and for illustrative purposes only. Not to scale.  
Floor plan by [www.frameworkphotos.co.uk](http://www.frameworkphotos.co.uk)