



Hanger Green, Ealing, W5

Haymills Court | 2 Bedrooms

£1,850 per month



LONDON ESTATES



BRIGHT AND SPACIOUS | WOODEN FLOORING | BUILT-IN TV | DOUBLE GLAZING | GREAT TRANSPORT LINKS

Available Date: 10th April 2024

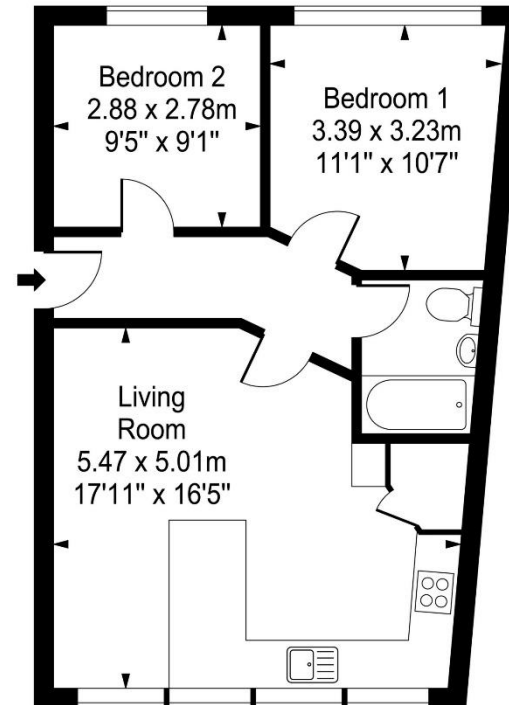
EPC Rating: E | Council Tax: D - £1,850 per month



LONDON ESTATES

Haymills Court

Approx. Gross Internal Area
54 Sq M - 581 Sq Ft



Second Floor

Every attempt is made to assure accuracy, however measurements are approximate and for illustrative purposes only. Not to scale.
Floor plan by www.frameworkphotos.co.uk