



**Dalling Road, Hammersmith, W6**

3 Bedrooms

**£3,200 per month**



LONDON ESTATES



COUNCIL TAX - £1,461 | THREE DOUBLE BEDROOMS | TWO BATHROOMS | LARGE LIVING ROOM | SEPARATE EAT-IN KITCHEN | NEW

Available Date: 18<sup>th</sup> August 2023

EPC Rating: D | Council Tax: E - £3,200 per month

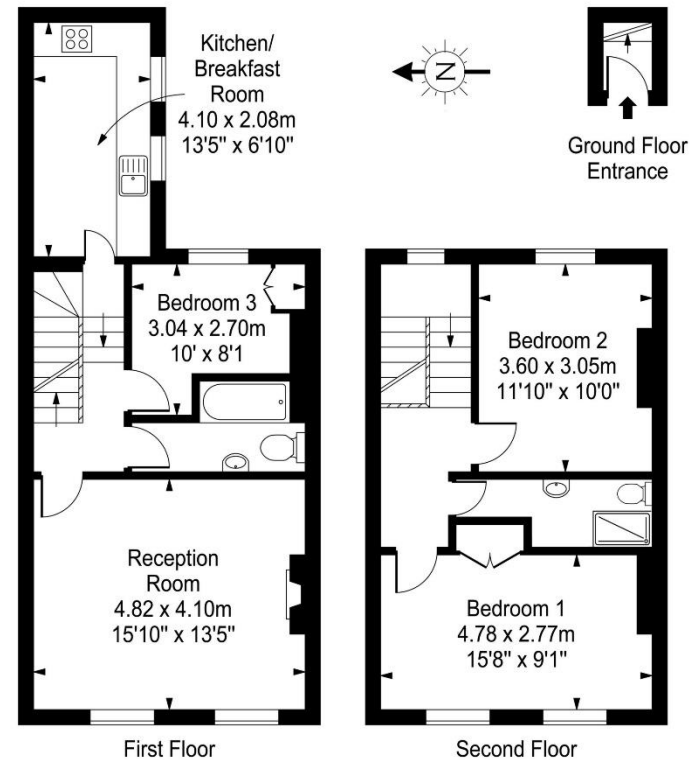


LONDON ESTATES

## Dalling Road

Approx. Gross Internal Area

86 Sq M - 925 Sq Ft



Every attempt is made to assure accuracy, however measurements are approximate and for illustrative purposes only. Not to scale.  
Floor plan by [www.frameworkphotos.co.uk](http://www.frameworkphotos.co.uk)