



Brackenbury Road, Hammersmith, W6

2 Bedrooms

£2,700 per month



LONDON ESTATES



AMAZING LOCATION | TWO DOUBLE BEDROOMS | TWO BATHROOMS | EXCEPTIONALLY LARGE | BALCONY | GARDEN

Available Date: 23rd December 2023

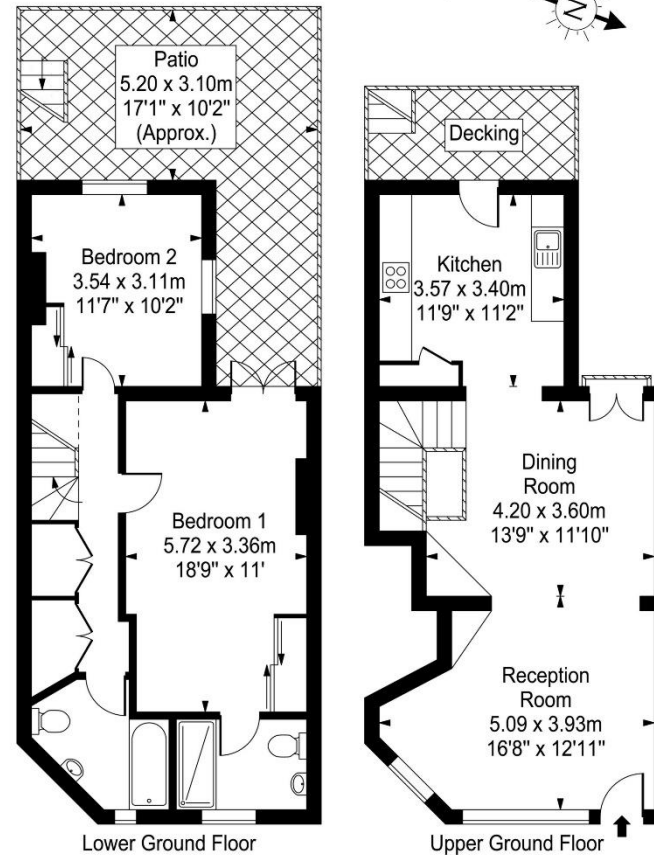
EPC Rating: D | Council Tax: E - £2,700 per month



LONDON ESTATES

Brackenbury Road

Approx. Gross Internal Area
99 Sq M - 1065 Sq Ft



Every attempt is made to assure accuracy, however measurements are approximate and for illustrative purposes only. Not to scale.
Floor plan by www.frameworkphotos.co.uk