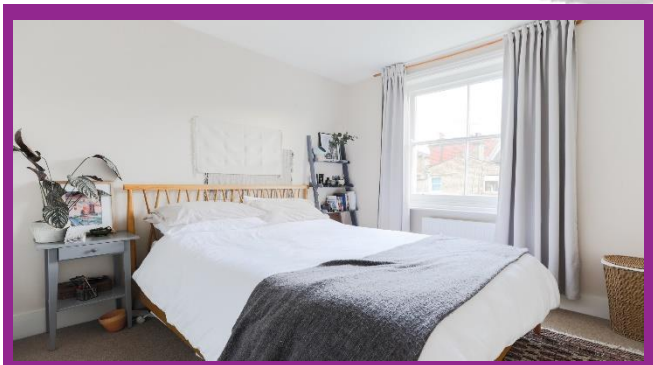




LONDON ESTATES

**Davisville Road, Shepherds Bush, W12**

£1285.00 per month



 1  1  1  N

**TO LET**



# LONDON ESTATES



- Good location
- Bright & Spacious
- Fully fitted kitchen
- Available end of Jan 2021
- Furnished
- Larger than average

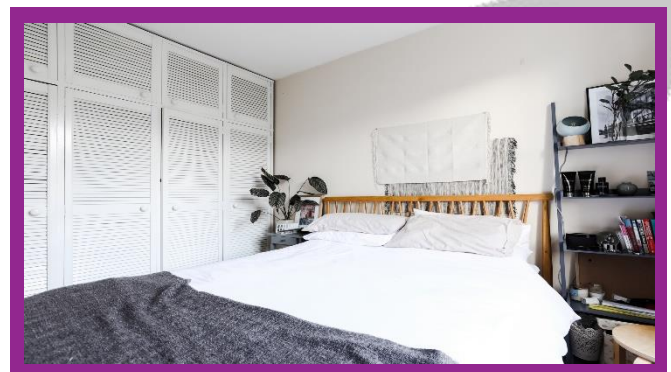
Energy Efficiency Rating		Environmental Impact (CO <sub>2</sub> ) Rating	
	Current	Potential	
Very energy efficient - lower running costs			Very environmentally friendly - lower CO <sub>2</sub> emissions
(92-100) <b>A</b>			(92-100) <b>A</b>
(81-91) <b>B</b>			(81-91) <b>B</b>
(69-80) <b>C</b>			(69-80) <b>C</b>
(55-68) <b>D</b>	<b>59</b>	<b>70</b>	(55-68) <b>D</b>
(39-54) <b>E</b>			(39-54) <b>E</b>
(21-38) <b>F</b>			(21-38) <b>F</b>
(1-20) <b>G</b>			(1-20) <b>G</b>
Not energy efficient - higher running costs			Not environmentally friendly - higher CO <sub>2</sub> emissions
<b>England, Scotland &amp; Wales</b>	EU Directive 2002/91/EC		<b>England, Scotland &amp; Wales</b>
			EU Directive 2002/91/EC

The graph shows the current energy efficiency of your home. The higher the rating the lower your fuel bills are likely to be. The potential rating shows the effect of undertaking the recommendations on page 3. The average energy efficiency rating for dwelling in England and Wales is band D (rating 60).

**Available Date:** 23rd January, 2021

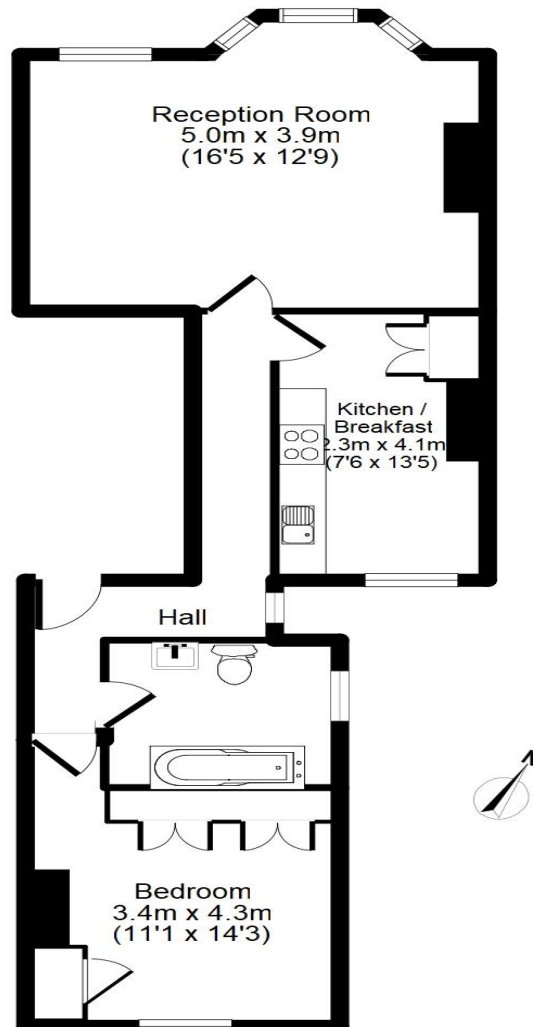
**Council Tax:** C

**Cost:** £1,000





## LONDON ESTATES



APPROX GROSS INTERNAL FLOOR AREA: 56 sq. m / 601 sq. ft

### **Davisville Road, Shepherd's Bush, London, W12 9SH**

Whilst every attempt has been made to ensure the accuracy of the floor plan contained here, measurements of doors, windows, rooms and any other items are approximate and no responsibility is taken to any error, omission, or mis-statement. This plan is for illustrative purpose only and should not be tested and no guarantee prospective purchaser. The service, system and appliances shown have not been tested and no guarantee as to their operability or efficiency can be given  
(c) PRESTVILLE LTD WWW.homesurvey4u