



Hammersmith Grove, Hammersmith, W6

2 Bedrooms

£2,850 per month



LONDON ESTATES



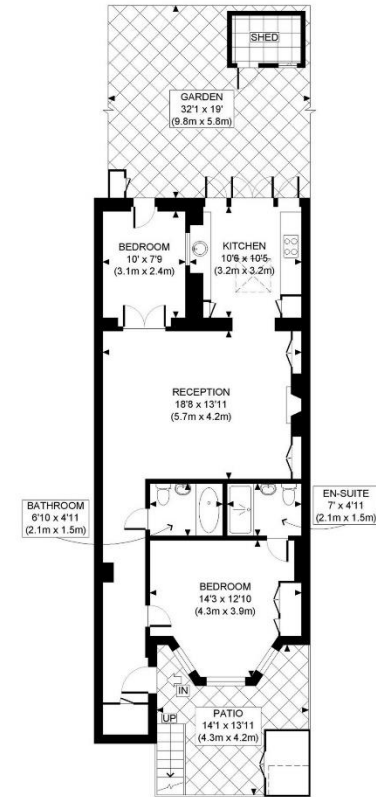
EXCELLENT LOCATION | TWO BEDROOMS | TWO BATHROOMS | WEST
FACING PRIVATE GARDEN | CONTEMPORARY FEEL | OWN PRIVATE

Available Date: 28th November 2022

EPC Rating: C | Council Tax: D - £2,850 per month



LONDON ESTATES



LOWER GROUND FLOOR
GROSS INTERNAL
FLOOR AREA 820 SQ FT



APPROX. GROSS INTERNAL FLOOR AREA: 820 SQ FT/ 76 SQM

PROPERTY PHOTO PLANS.CO.UK
ONE STOP SHOP FOR PROPERTY MARKETING

This plan is for illustrative purposes only and should be used as such by any prospective client. Whilst every attempt has been made to ensure the accuracy of the Floor Plan contained here, measurements of the doors, windows, rooms and any other items are approximate and no responsibility is taken for any errors, omissions, or misstatement. The services, systems and appliances shown have not been tested and no guarantee as to the operability or efficiency can be given.

www.london-estates.net | 61 Dalling Road, Hammersmith, London, W6 0JD | 0208 741 8485 | office@london-estates.net