



Salisbury Road, Queens Park, NW6

1 Bedroom Apartment

£1,850 per month



LONDON ESTATES



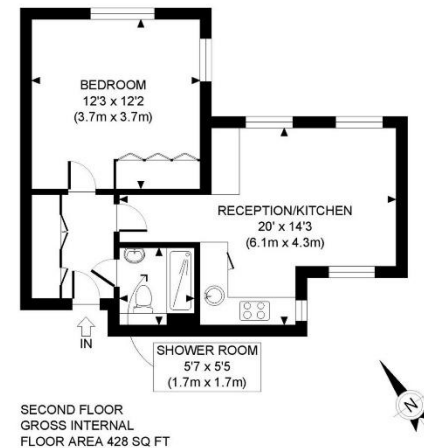
WOODEN FLOORS | DOUBLE GLAZED WINDOWS | UNDERFLOOR HEATING | DISHWASHER | GREAT LOCATION | CLOSE TO TRANSPORT

Available Date: 8th August 2024

EPC Rating: C | Council Tax: £2,036 per year



LONDON ESTATES



SECOND FLOOR
GROSS INTERNAL
FLOOR AREA 428 SQ FT

APPROX. GROSS INTERNAL FLOOR AREA: 428 SQ FT/ 40 SQM

PROPERTY PHOTO PLANS.CO.UK
ONE STOP SHOP FOR PROPERTY MARKETING

This plan is for illustrative purposes only and should be used as such by any prospective client. Whilst every attempt has been made to ensure the accuracy of the Floor Plan contained here, measurements of the doors, windows, rooms and any other items are approximate and no responsibility is taken for any errors, omissions, or misstatement. The services, systems and appliances shown have not been tested and no guarantee as to the operability or efficiency can be given.