



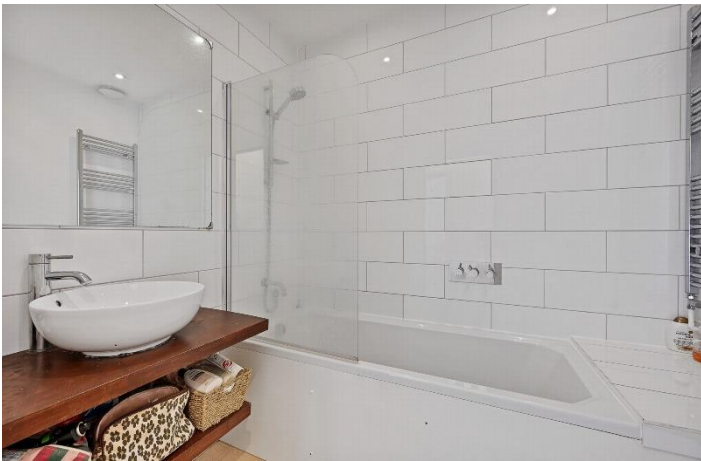
Halford Road, Fulham, SW6

2 Bedrooms

£2,200 per month



LONDON ESTATES



FANTASTIC LOCATION | CLOSE TO TUBE | PRIVATE GARDEN | EXCELLENT LOCAL AMENITIES | CLOSE TO SHOPS | OPEN PLAN KITCHEN

Available Date: 31st July 2023

EPC Rating: C | Council Tax: D - £2,200 per month



LONDON ESTATES



LOWER GROUND FLOOR
GROSS INTERNAL
FLOOR AREA 503 SQ FT

APPROX. GROSS INTERNAL FLOOR AREA: 503 SQ FT/ 47 SQM

PROPERTY PHOTO PLANS.CO.UK
ONE STOP SHOP FOR PROPERTY MARKETING

This plan is for illustrative purposes only and should be used as such by any prospective client. Whilst every attempt has been made to ensure the accuracy of the Floor Plan contained here, measurements of the doors, windows, rooms and any other items are approximate and no responsibility is taken for any errors, omissions, or misstatement. The services, systems and appliances shown have not been tested and no guarantee as to the operability or efficiency can be given.