



Fulham Park Gardens, Fulham, SW6

1 Bedrooms

£525,000 Long Lease



LONDON ESTATES



Bright and Spacious | Large bathroom | Well Proportioned | Nearby Open Spaces | Great location close to Fulham, Putney Bridge and Hurlingham

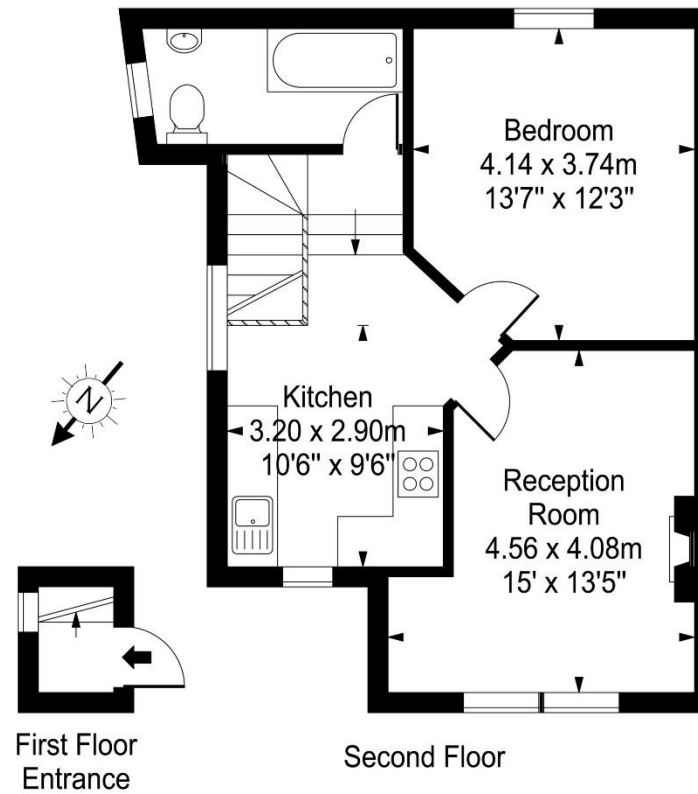
EPC Rating: E | Council Tax: D - £525,000 Long Lease



LONDON ESTATES

Fulham Park Gardens

Approx. Gross Internal Area
54 Sq M - 581 Sq Ft



Every attempt is made to assure accuracy, however measurements are approximate and for illustrative purposes only. Not to scale.
Floor plan by www.frameworkphotos.co.uk