



**Kings Road, Chelsea, SW10**

Blantyre Walk, Worlds End Estate | 3 Bedrooms

**£3,350 per month**



LONDON ESTATES



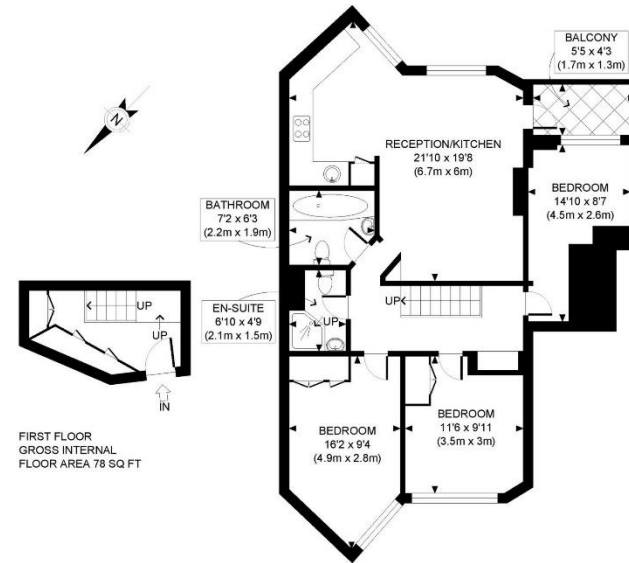
THREE BEDROOMS | TWO BATHROOMS | EXCELLENT LOCAL AMENITIES | RIVER VIEWS | NEWLY REFURBISHED | UN-FURNISHED

Available Date: 12<sup>th</sup> August 2023

EPC Rating: C | Council Tax: D - £3,350 per month



LONDON ESTATES



SECOND FLOOR GROSS INTERNAL FLOOR AREA 849 SQ FT

APPROX. GROSS INTERNAL FLOOR AREA: 927 SQ FT/ 86 SQM

**PROPERTY PHOTO PLANS**.CO.UK  
ONE STOP SHOP FOR PROPERTY MARKETING

This plan is for illustrative purposes only and should be used as such by any prospective client. Whilst every attempt has been made to ensure the accuracy of the Floor Plan contained here, measurements of the doors, windows, rooms and any other items are approximate and no responsibility is taken for any errors, omissions, or misstatement. The services, systems and appliances shown have not been tested and no guarantee as to the operability or efficiency can be given.