



St Stephens Avenue, Shepherds Bush, W12

- Bedrooms

£7,995 per month



LONDON ESTATES



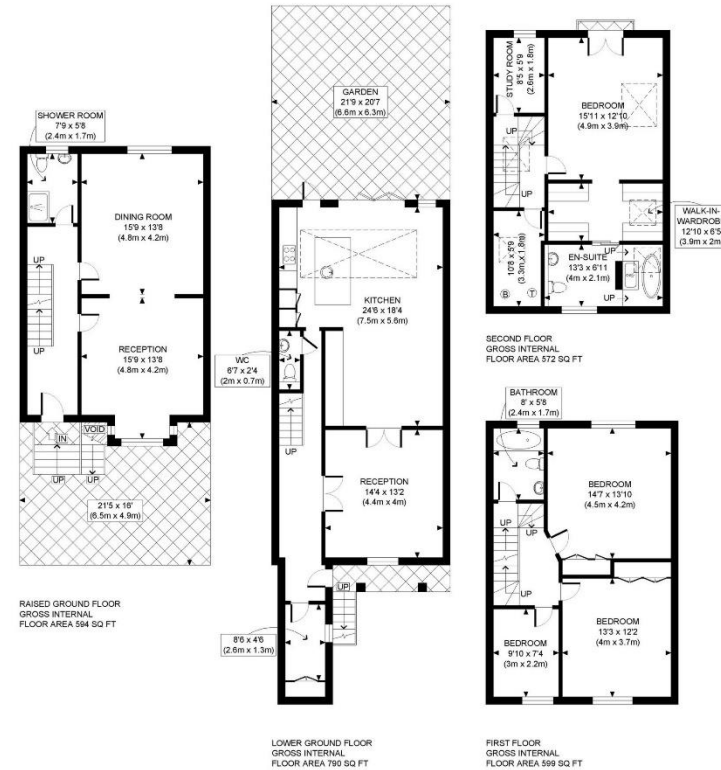
NEWLY DEVELOPED | HIGH CEILINGS | EXCEPTIONAL SPACE | LARGE OPEN PLAN FAMILY ROOM | FLEXIBLE ACCOMODATION | MASTER SUITE WITH

Available Date: 1st August 2023

EPC Rating: TBC | Council Tax: G - £7,995 per month



LONDON ESTATES



APPROX. GROSS INTERNAL FLOOR AREA: 2555 SQ FT / 237 SQM

PROPERTY PHOTO PLANS.CO.UK
ONE STOP SHOP FOR PROPERTY MARKETING

This plan is for illustrative purposes only and should be used as such by any prospective client. Whilst every attempt has been made to ensure the accuracy of the Floor Plan contained here, measurements of the doors, windows, rooms and any other items are approximate and no responsibility is taken for any errors, omissions, or misstatement. The services, systems and appliances shown have not been tested and no guarantee as to the operability or efficiency can be given.