



Bradmore Park Road, Hammersmith, W6

3 Bedrooms

£3,350 per month



LONDON ESTATES



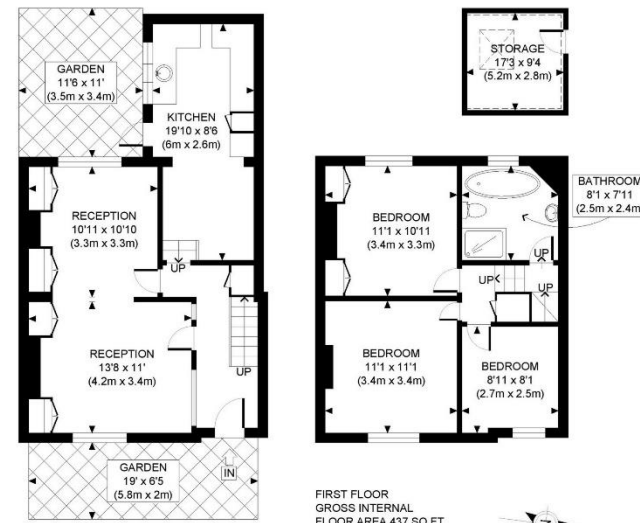
AMAZING LOCATION | THREE BEDROOM HOUSE | FRONT AND REAR GARDENS | EAT-IN KITCHEN | CHERRY TREE LINED STREET | THE HEART OF

Available Date: 16th September 2024

EPC Rating: D | Council Tax: G - £3,350 per month



LONDON ESTATES



GROUND FLOOR
GROSS INTERNAL
FLOOR AREA 526 SQ FT

APPROX. GROSS INTERNAL FLOOR AREA WITH STORAGE: 1029 SQ FT/ 96 SQM
APPROX. GROSS INTERNAL FLOOR AREA WITHOUT STORAGE: 963 SQ FT/ 89 SQM

PROPERTY PHOTO PLANS.CO.UK
ONE STOP SHOP FOR PROPERTY MARKETING

This plan is for illustrative purposes only and should be used as such by any prospective client. Whilst every attempt has been made to ensure the accuracy of the Floor Plan contained here, measurements of the doors, windows, rooms and any other items are approximate and no responsibility is taken for any errors, omissions, or misstatement. The services, systems and appliances shown have not been tested and no guarantee as to the operability or efficiency can be given.