



Rainville Road, Hammersmith, W6

Crabtree Hall | 1 Bedrooms

£1,475 per month



LONDON ESTATES



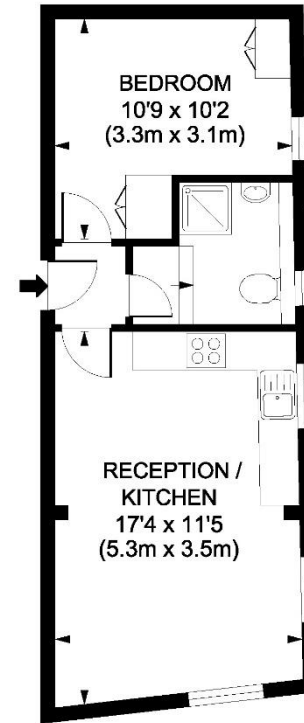
DIRECT RIVER VIEWS | AMAZING LOCATION | EXCELLENT LOCAL AMINITIES | CLOSE TO PARKS AND RIVER THAMES | TRANSPORT AT

Available Date: 1st March 2025

EPC Rating: E | Council Tax: C - £1,475 per month



LONDON ESTATES



THIRD FLOOR

Rainville Road, W6

Gross internal area 344 sq ft/32 sq metres

@photosandfloorplans.com