



Delaford Street, Fulham, SW6

2 Bedrooms

£3,250 per month



LONDON ESTATES



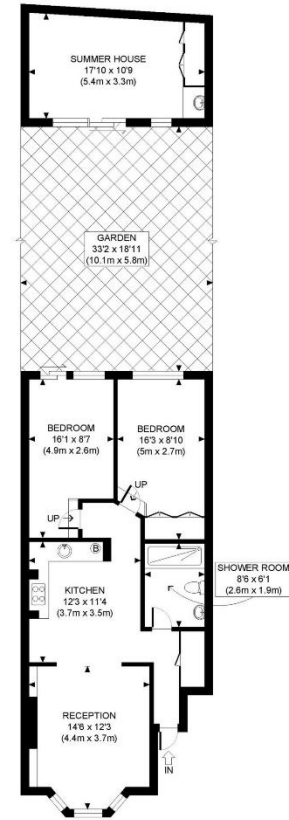
TWO DOUBLE BEDROOMS | SW FACING GARDEN | OPEN PLAN
LOUNGE | MODERN KITCHEN | SUMMER HOUSE | HOME GYM / OFFICE

Available Date: 30th June 2025

EPC Rating: C | Council Tax: E - £3,250 per month



LONDON ESTATES



APPROX. GROSS INTERNAL FLOOR AREA WITH SUMMER HOUSE: 888 SQ FT/ 82 SQM
APPROX. GROSS INTERNAL FLOOR AREA WITHOUT SUMMER HOUSE: 706 SQ FT/ 66 SQM

PROPERTY PHOTO PLANS .CO.UK
ONE STOP SHOP FOR PROPERTY MARKETING

This plan is for illustrative purposes only and should be used as such by any prospective client. Whilst every attempt has been made to ensure the accuracy of the Floor Plan contained here, measurements of the doors, windows, rooms and any other items are approximate and no responsibility is taken for any errors, omissions, or misstatement. The services, systems and appliances shown have not been tested and no guarantee as to the operability or efficiency can be given.

www.london-estates.net | 61 Dalling Road, Hammersmith, London, W6 0JD | 0208 741 8485 | office@london-estates.net