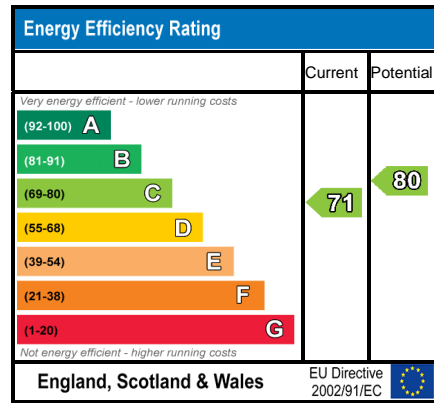
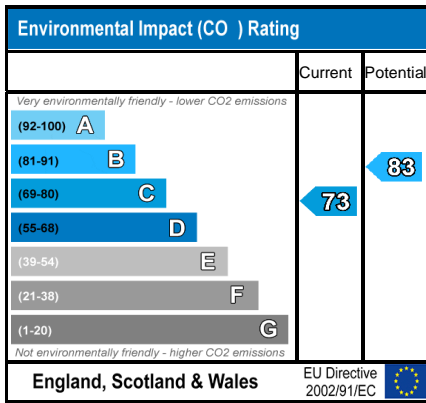


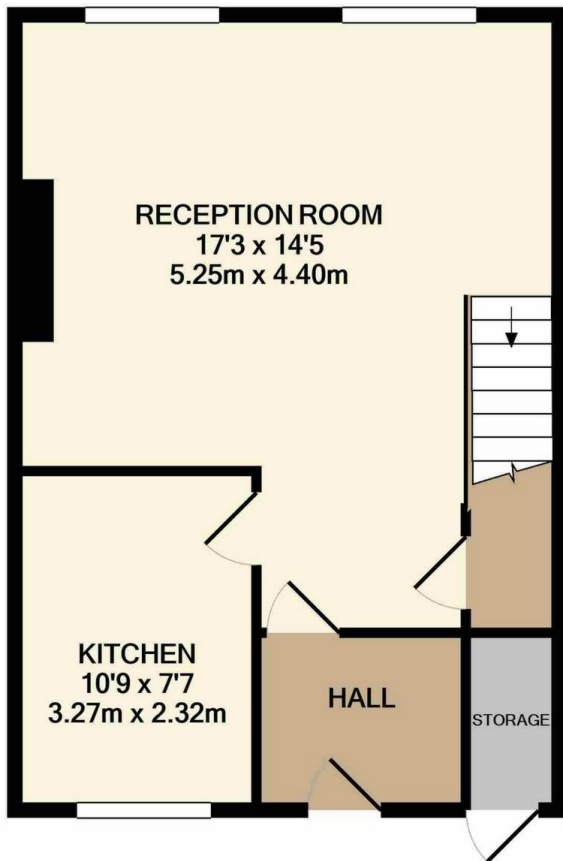
Asking price of £230,000 Haseldine Road, London Colney, AL2



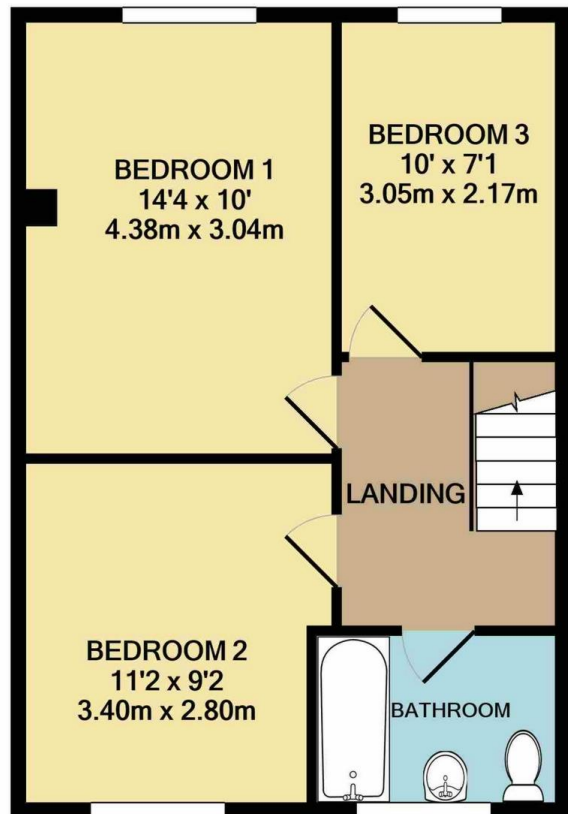
3 BEDROOM duplex apartment on 2 FLOORS:

This 3 bedroom duplex apartment has a large 17' (5.25m) reception room and a good size kitchen on the first floor and 3 bedrooms and a bathroom/wc on the second floor. The reception room is a large bright room with laminate flooring and is open to the staircase. The flat is located above a small parade of shops.





GROUND FLOOR



1ST FLOOR

HASELDINE ROAD AL2
 TOTAL APPROX. FLOOR AREA 882 SQ.FT. (81.9 SQ.M.)
 Measurements are approximate. Not to scale. Illustrative purposes only
 Made with Metropix ©2020

VIEWING BY APPOINTMENT WITH AGENTS
 The Studio (Ground Floor), 90b Walm Lane, Willesden Green, London, NW2 4QY

T: 020 3018 6292 E: mark@thelsl.co.uk www.thelsl.co.uk

General: While we endeavour to make our sales particulars fair, accurate and reliable, they are only a general guide to the property and, accordingly, if there is any point which is of particular importance to you, please contact the office and we will be pleased to check the position for you, especially if you are contemplating travelling some distance to view the property.

Measurements: These approximate room sizes are only intended as general guidance. You must verify the dimensions carefully before ordering carpets or any built-in furniture.

Services: Please note we have not tested the services or any of the equipment or appliances in this property, accordingly we strongly advise prospective buyers to commission their own survey or service reports before finalizing their offer to purchase.

THESE PARTICULARS ARE ISSUED IN GOOD FAITH BUT DO NOT CONSTITUTE REPRESENTATIONS OF FACT OR FORM PART OF ANY OFFER OR CONTRACT. THE MATTERS REFERRED TO IN THESE PARTICULARS SHOULD BE INDEPENDENTLY VERIFIED BY PROSPECTIVE BUYERS OR TENANTS. NEITHER THE LONDON LETTING COMPANY NOR ANY OF ITS EMPLOYEES OR AGENTS HAS ANY AUTHORITY TO MAKE OR GIVE ANY REPRESENTATION OR WARRANTY WHATEVER IN RELATION TO THIS PROPERTY.

YOUR HOME IS AT RISK IF YOU DO NOT KEEP UP REPAYMENTS ON A MORTGAGE OR OTHER LOAN SECURED ON IT.

Written quotations available on request. All loans secured on property. Life assurance is usually required.