



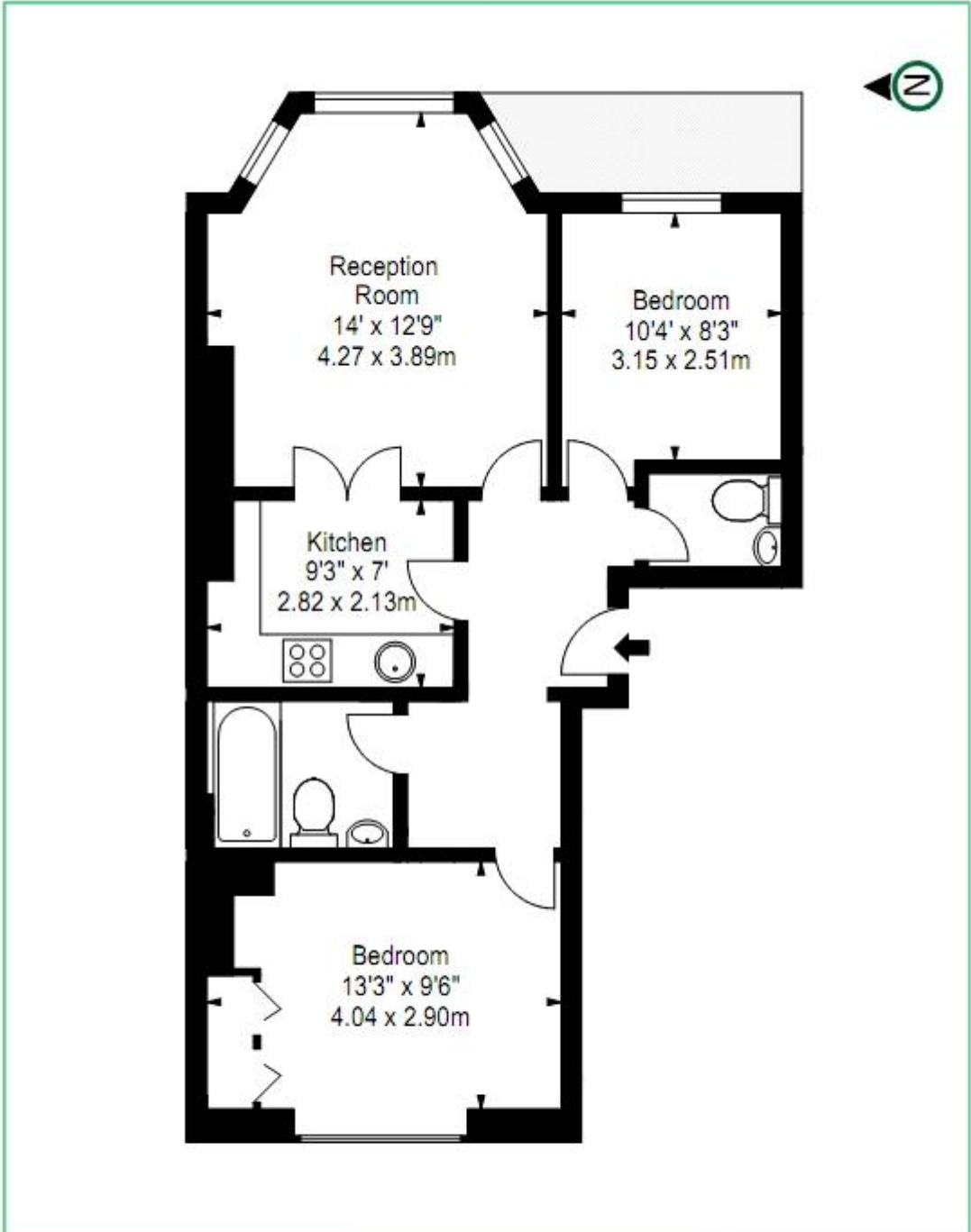
Cedar House, Marylebone, W1U

£620 per week

- Heart of Marylebone
- Broadband
- Digital TV
- Baker Street & Marylebone Station
- CCTV
- WIFI
- Lift
- Regents Park & Hyde Park

Positioned seconds to London's Hyde Park and Regents Park is a first floor 2 bed flat positioned in the heart of Marylebone, in the highly prestigious Cedar House offering CCTV, Broadband/WIFI, Digital TV and Lift access. Baker Street and London Marylebone Stations are within 8 minutes walking distance.

Size: 588 Sq Ft. Available Now!



FLAT 8
 39-41 NOTTINGHAM PLACE
 LONDON W1U 5LU

Approx Gross Internal Area*
 599 Ft² - 55.65 M²

Surveyed and Drawn by
BKR
 Surveyors
 Sunning Hill House, 3-7 Sunninghill Road
 London, SW16 2JG

First Floor

Tel: 02045 2211 2020
 Fax: 02045 2211 2024
info@bkr.co.uk
www.bkr.co.uk

* As Defined by RICS - Code of Measuring Practice
 Illustration For Identification Purposes Only. Not to Scale
 All Calculations include Any/All Areas Under 1.5m Head Height.
 © BKR 2014