



**Fulham Road, Chelsea, SW3**

**£825 per week**

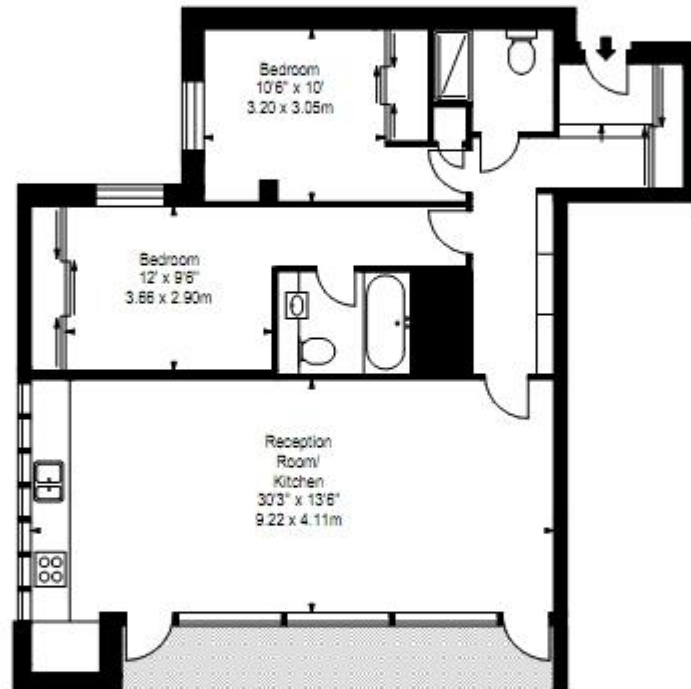
- 2 bed 2 bath
- CCTV & Video Entry
- Porter
- Size: 988 Sq. Ft.
- Luxury apartment
- Lift
- Parking
- South Kensington (2 mins)

**Moments to Hyde Park! A private, portered apartment block perfectly located within the heart of Chelsea. 161 Fulham Road is located moments from the fashionable restaurants of South Kensington, Knightsbridge and Sloane Square/Kings Road. The area is a hive of local activity with museums and all the best designer shops including Ralph Lauren, Chanel, Joseph and Stella McCartney to name a few. A highly stylish 2 bedroom private apartment located on the first floor in London's sought after South Kensington. Benefits CCTV, Parking, Porter, Video-Entry, Lifts. Seconds to Circle, District and Piccadilly Line. Size: 988 Sq. Ft. Furnished or unfurnished. Available 8th December!**

**FLAT 1A,  
161 FULHAM ROAD, SW3**

**Approx. Gross Internal Area \***  
**988 Ft<sup>2</sup> - 91.79 M<sup>2</sup>**

Illustration For Identification Purposes Only. Not to Scale  
\* As Defined by RICS - Code of Measuring Practice



FIRST FLOOR

**BKR**

[www.bkrfloorplans.co.uk](http://www.bkrfloorplans.co.uk)  
T: 0845 257 2023  
© BKR 2010