

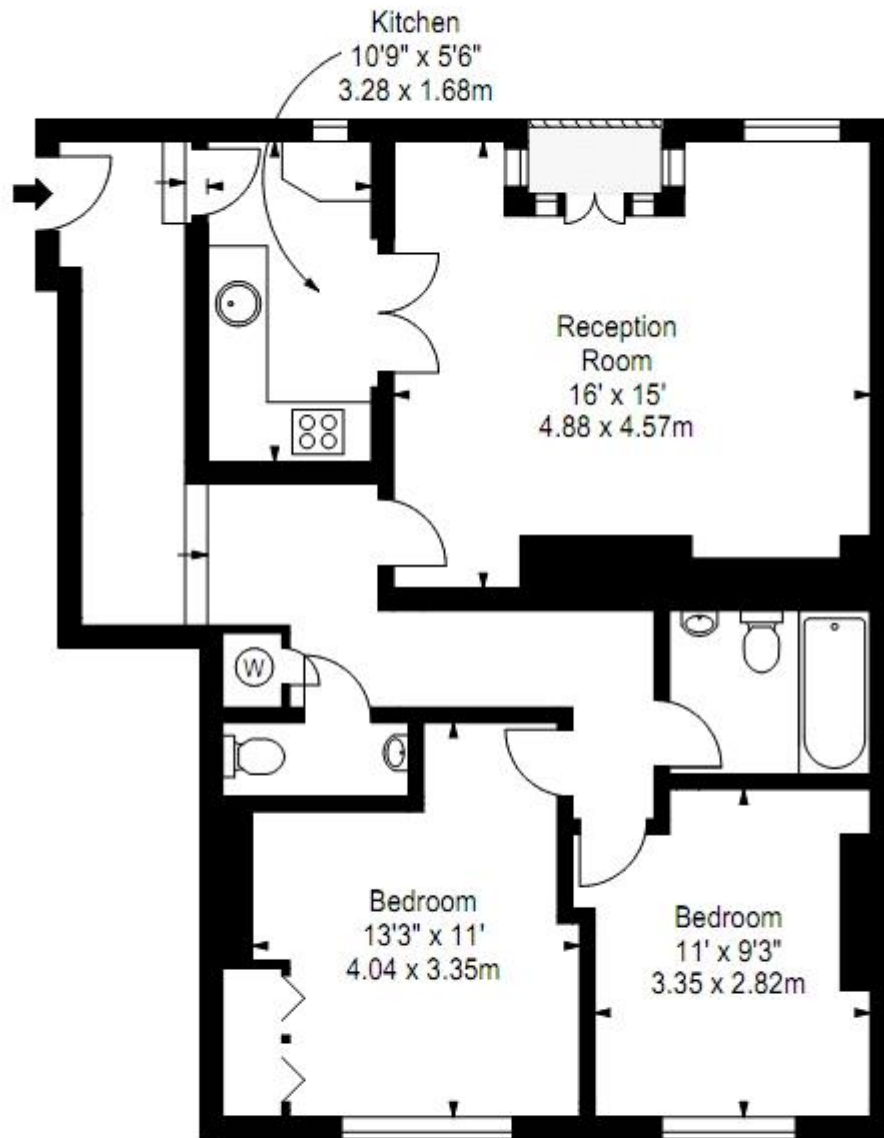


Cedar House, Marylebone, W1U

£720 per week

- Heart of Marylebone
- Broadband
- Digital TV
- Baker Street (3 mins)
- CCTV & Lift
- WiFi
- Regents Park(5 mins)
- Size: 779 Sq. Ft.

Positioned seconds to London's Hyde Park and Regents Park is a ground floor 2 bedroom flat positioned in the heart of Marylebone, in the highly prestigious Cedar House offering CCTV, Broadband/WIFI, Digital TV and Lift access. Baker Street and London Marylebone Stations are within 8 minutes walking distance. Size: 779 Sq Ft. Available Now!



FLAT 7
39-41 NOTTINGHAM PLACE
LONDON W1U 5LU

Ground Floor

Approx Gross Internal Area*

778 Ft² - 72.28 M²

Surveyed and Drawn By:

BKR

Surreyhill House, 2-7 Surreyhill Road
London, SW16 2UG

Tel: 02045 257 2023

Fax: 02045 257 2024

info@bkrplanning.co.uk

www.bkrplanning.co.uk

© BKR 2014

* As Defined by RICS - Code of Measuring Practice

Illustration For Identification Purposes Only. Not to Scale
All Calculations include Any/All Areas Under 1.5m Head Height.