

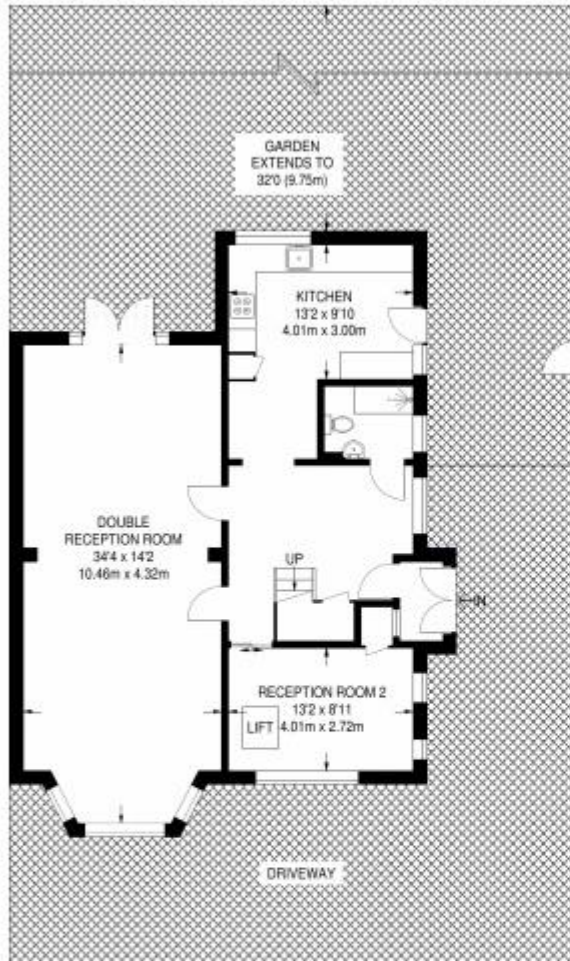


Anson Road, Cricklewood, NW2

£1,350,000 Freehold

- Semi-Detached House • 4 Bedroom
- Driveway (for 2 cars) • Development Potential
- South Facing Garden • Size: 1986 Sq. Ft.

*****New Home for 2016 Must be seen***** Celebrate the new year in this beautiful 4 bedroom Semi-Detached house in Cricklewood's Anson Road. Features private driveway with space for 2 cars and private south facing garden. Positioned close to all the local Primary Schools, Secondary Schools and amenities of Willesden Green and Cricklewood with the lovely greenery of Gladstone Park minutes away. There is also further scope for development for loft conversion, side and rear extensions (2-3 storeys) subject to planning consent. Willesden Green (Jubilee Line). Tenure: Freehold. Size: 1986 Sq. Ft.



GROUND FLOOR (EXCLUDING LIFT)
1002 SQ FT / 93.1 SQ M



FIRST FLOOR (EXCLUDING LIFT)
994 SQ FT / 92.3 SQ M



APPROXIMATE GROSS INTERNAL AREA
1996 SQ FT / 185.4 SQ M