

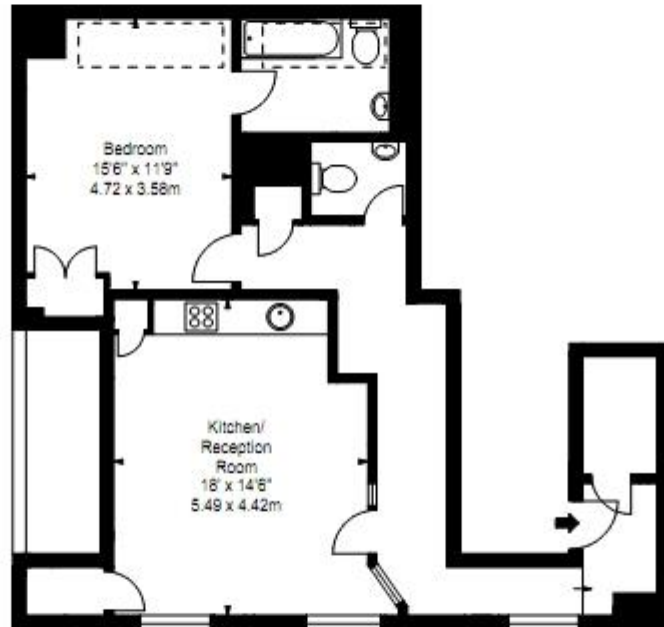


Grosvenor Hill, Mayfair, W1K

£870 per week

- Stylish 1 bed in Mayfair
- Exquisite interiors
- Solid Wooden floors
- Video Entryphone
- CCTV & Parking
- Size: 785 Sq. Ft.

Available 29th February! Luxury 1 bedroom flat to rent in W1K. Ultra-Stylish 1 bedroom Mews in the heart of Mayfair. Offered furnished or unfurnished, the property comprises of one large double bedroom with en-suite bathroom, a stunning reception with floor to ceiling windows as well as dining area, fitted kitchen and boasts wooden flooring throughout. The apartment benefits from modern interiors for lavish living and further features on site CCTV with secure parking space. Bond Street Underground Station and Charing Cross is also within easy access. EPC-Band: 61. Size: 785 Sq. Ft.



FIRST FLOOR

FLAT 1
9-11 GROSVENOR HILL
LONDON W1K 3QA

First Floor

Approx Gross Internal Area*
785 Sq Ft - 72.93 Sq M

* As Defined by RICS - Code of Measuring Practice

Illustration For Identification Purpose Only. Not to Scale
All Calculations include Any/All Areas Under 1.5m Head Height.

Approved and Created by
BKR

Sunnyhill House, 3-7 Sunnyhill Road
London, SW16 2UG

Tel: 0245 257 2023
Fax: 0245 257 2024
info@bkrinspections.co.uk
www.bkrinspections.co.uk
© BKR 2014