



www.mapesburyproperty.co.uk



Hill Street, Mayfair, W1J

£650 per week

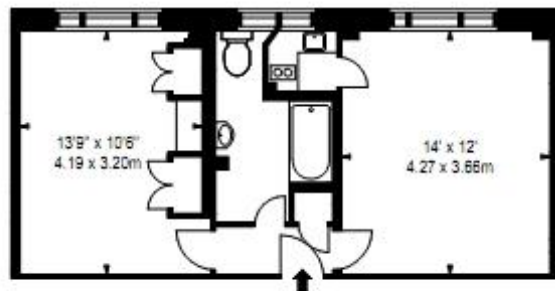
- CCTV/Porter
- Video-Entry
- Oxford Circus/Bond Street
- Close to Hyde Park
- Lift Access
- Size: 427 Sq. Ft.

Available Now! Luxury 1 bedroom flat located in London's highly prestigious sought after Mayfair, between Hyde Park and Green Park. The property is located in Hill Street and offers CCTV, on site Porter, Video Entry, Lift Access. The transport links include underground stations which are Green Park Station and Bond Street station, Marble Arch Station all within a short stroll away. EPC-Rate: 59. Size: 427 Sq. Ft.

**FLAT 10,
39 HILL STREET, W1**

APPROX. GROSS INTERNAL AREA*
427 Ft² - 39.67 M²

ILLUSTRATION FOR IDENTIFICATION PURPOSES ONLY, NOT TO SCALE
* As Defined by RICS - Code of Measuring Practice



FIRST FLOOR

BKR

www.bkr.co.uk
© 2041257 2023
© BKR 2011