



www.mapesburyproperty.co.uk



Hill Street, Mayfair, W1J

£880 per week

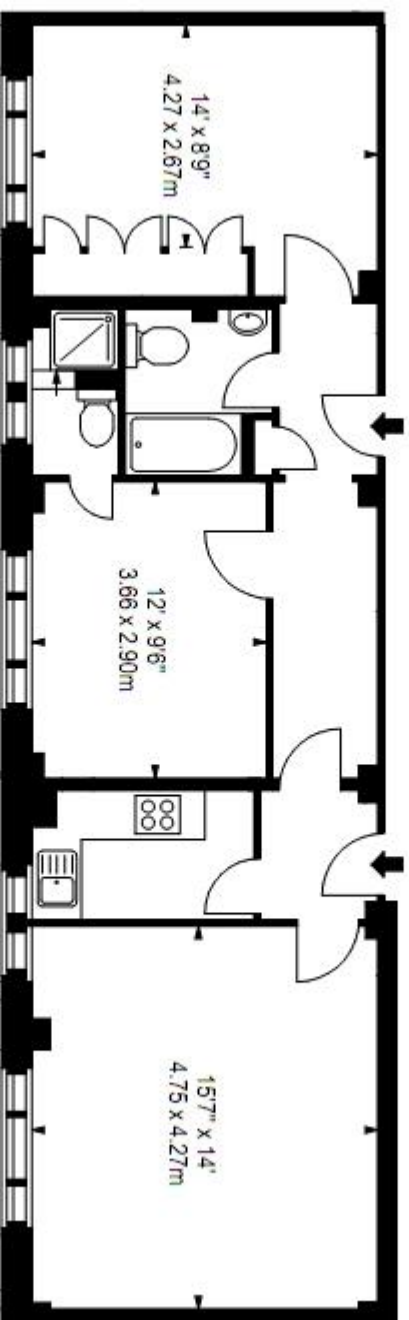
- CCTV
- Video-Entry
- Oxford Circus/Bond Street
- Porter
- Lift Access
- Size: 728 Sq. Ft.

Available Now! Luxury 1 bedroom flat located in London's highly prestigious sought after Mayfair, between Hyde Park and Green Park. The property is located in Hill Street and offers CCTV, on site Porter, Video Entry, Lift Access. Hill Street, benefits from spacious living accommodation, lift service, on-site building manager, and is nestled conveniently between two of London's parks Hyde Park and Green Park. The transport links include underground stations which are Green Park Station and Bond Street station, Marble Arch Station all within a short stroll away. EPC-Rate: 71. Size: 728 Sq. Ft.

**FLAT 64-65,
39 HILL STREET, W1**

APPROX. GROSS INTERNAL AREA *
728 Ft² - 67.63 M²

ILLUSTRATION FOR IDENTIFICATION PURPOSES ONLY. NOT TO SCALE
* As Defined by RICS - Code of Measuring Practice



SIXTH FLOOR

BKR

www.bkr.co.uk
T: 0845 257 2223
© BKR 2011