



MAPESBURY
ESTATE AGENTS

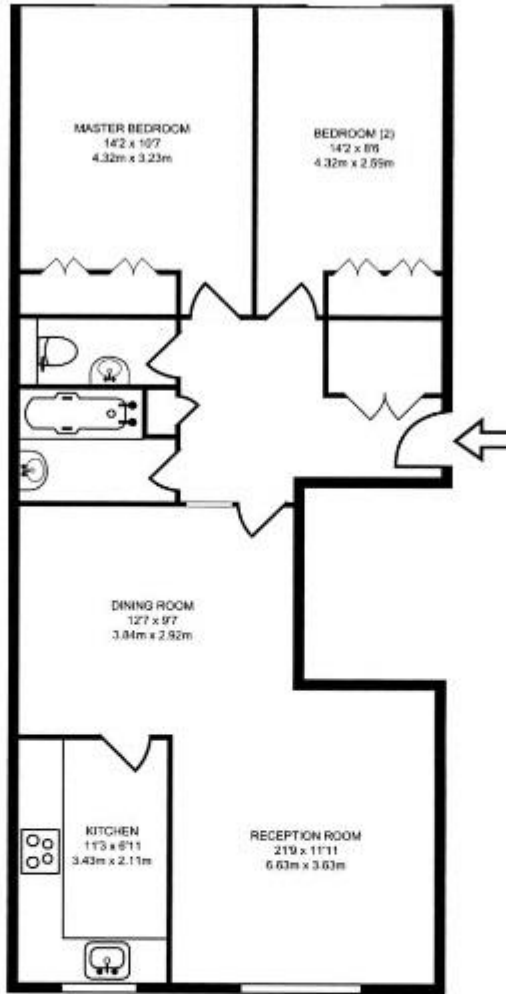


Westmeath House, Dollis Hill, NW2

£350 per week

- 2 bedroom flat
- Wooden Floors
- Entry phone
- Communal Gardens
- Opposite Park
- Close to schools

Available Now! Modern large 2 bedroom flat with private residents parking, communal gardens and entry phone, located opposite the beautiful greenery of Gladstone Park. The property features wooden flooring throughout and boasts natural lighting with ample storage space. Fitted kitchen with integrated appliances and Gas Central Heating. EPC: 75. Size: 849 Sq. Ft.



WESTMEATH HOUSE NW2 7DF
SECOND FLOOR FLAT
SIZE: 783 SQ FT

