



www.mapesburyproperty.co.uk

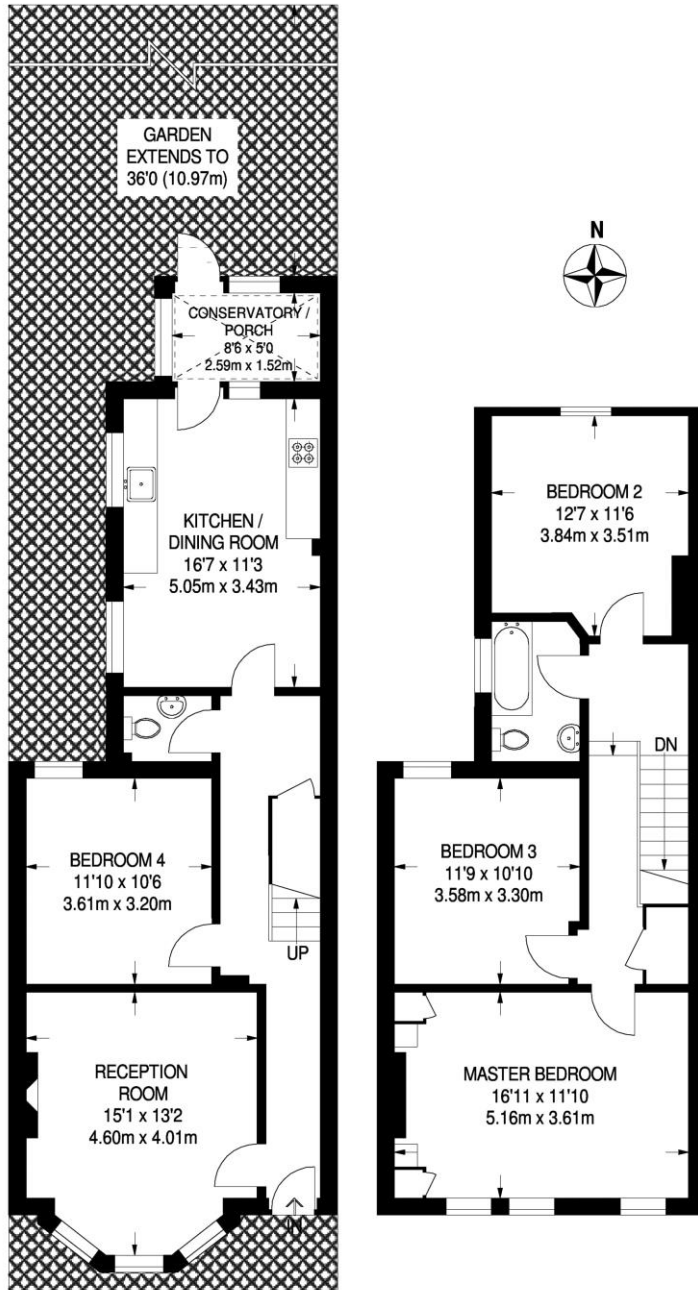


## Scrubs Lane, Kensal Green, NW10

**£670 per week**

- 4/5 bedroom
- Open Plan Kitchen
- Bus Links
- Private Garden
- Gas Central Heating
- Size: 1379 Sq. Ft.

**\*Available Now\*** Large 4/5 bedroom house with private garden in Scrubs Lane, London NW10. The property is arranged over 2 floors and boasts ample living space with storage space as well as natural lighting. Comprises of 4 bedrooms and a reception room with Bay-Windows. Features an impressive large open plan kitchen with dining area in addition to gas central heating as well as double glazing. Ideal for sharers and professionals. Excellent Bus links and Underground/London-Overground into Central London. EPC: 52 Size: 1379 Sq. Ft.



Scrubs Lane Kensal Green NW10 6QU  
 Total Size: 1379 SQ FT/128.1 SQ M