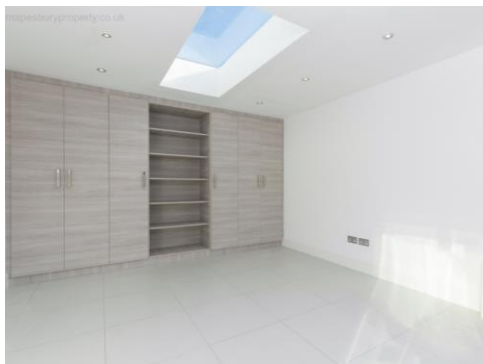


Cedar Road, Cricklewood, NW2
£700,000 Leasehold offer in excess off



- **New Luxury Home**
- **Private Rear Garden with House**
- **Modern Designer Kitchen**
- **3 Bed 2 Bath**
- **Outhouse/Office Space**
- **Size: 1130 Sq. Ft. (EPC:57)**



Approx Gross Internal Area Sq ft 1,130 Sq mt 105

Whilst every attempt had been made to ensure the accuracy of the floorplan shown, all the measurements, positioning fixtures, fittings and any other data shown are an approximate interpretation for illustrative purposes only and are not for scale. No responsibility is taken for any error, omission, miss-statement or use of data shown.

Floor plan by: www.whitephotos.co.uk