



## Chartwell Court, Brook Road, Dollis Hill, NW2

**£700,000**

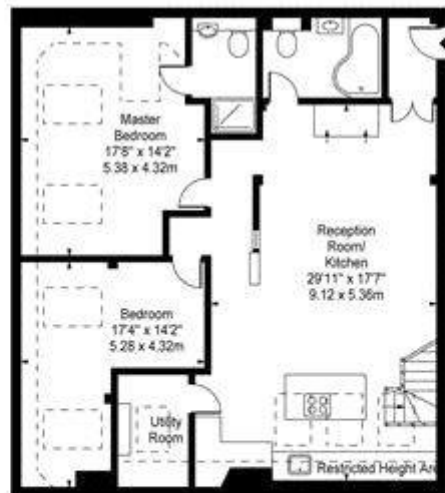
- Unique Penthouse
- Potential to renovate
- 2 Bed|2 Bath
- Natural Lighting
- CCTV & Lift
- Gated Development

# MAPESBURY

Chartwell Court,  
Brook Road, NW2



Fourth Floor



Third Floor

Approx Gross Internal Area    1342 Sq Ft - 124.67 Sq M  
Approx Floor Area Including Restricted Heights    1645 Sq Ft - 152.82 Sq M