



**MAPESBURY**  
ESTATE AGENTS

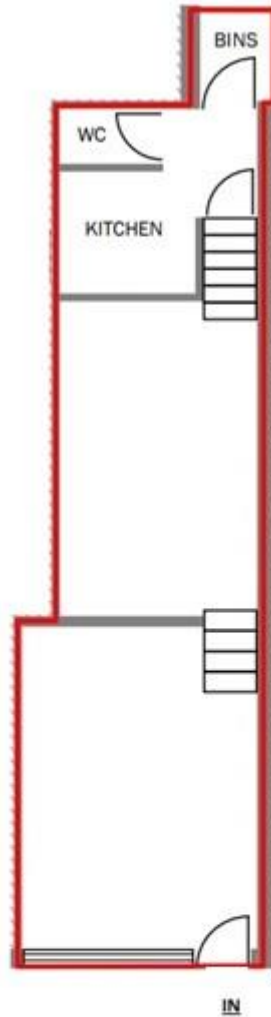


**Cricklewood Broadway, Cricklewood, NW2**      **£25,000 per annum**

- Retail Shop To Let
- Prime High Street
- New Lease Available
- Excellent Bus Links
- Close to Thameslink
- Goodwill £12K
- Class-E use
- Size: 550 Sq Ft circa



**MAPESBURY**  
**ESTATE AGENTS**



**CRICKLEWOOD BROADWAY NW2 3EP**  
**SIZE: 550 SQ FT (51 SQ M) APPROX.**