



**MAPESBURY**  
ESTATE AGENTS



**Heber Road, Cricklewood, NW2**

**£1,249,000 Freehold**

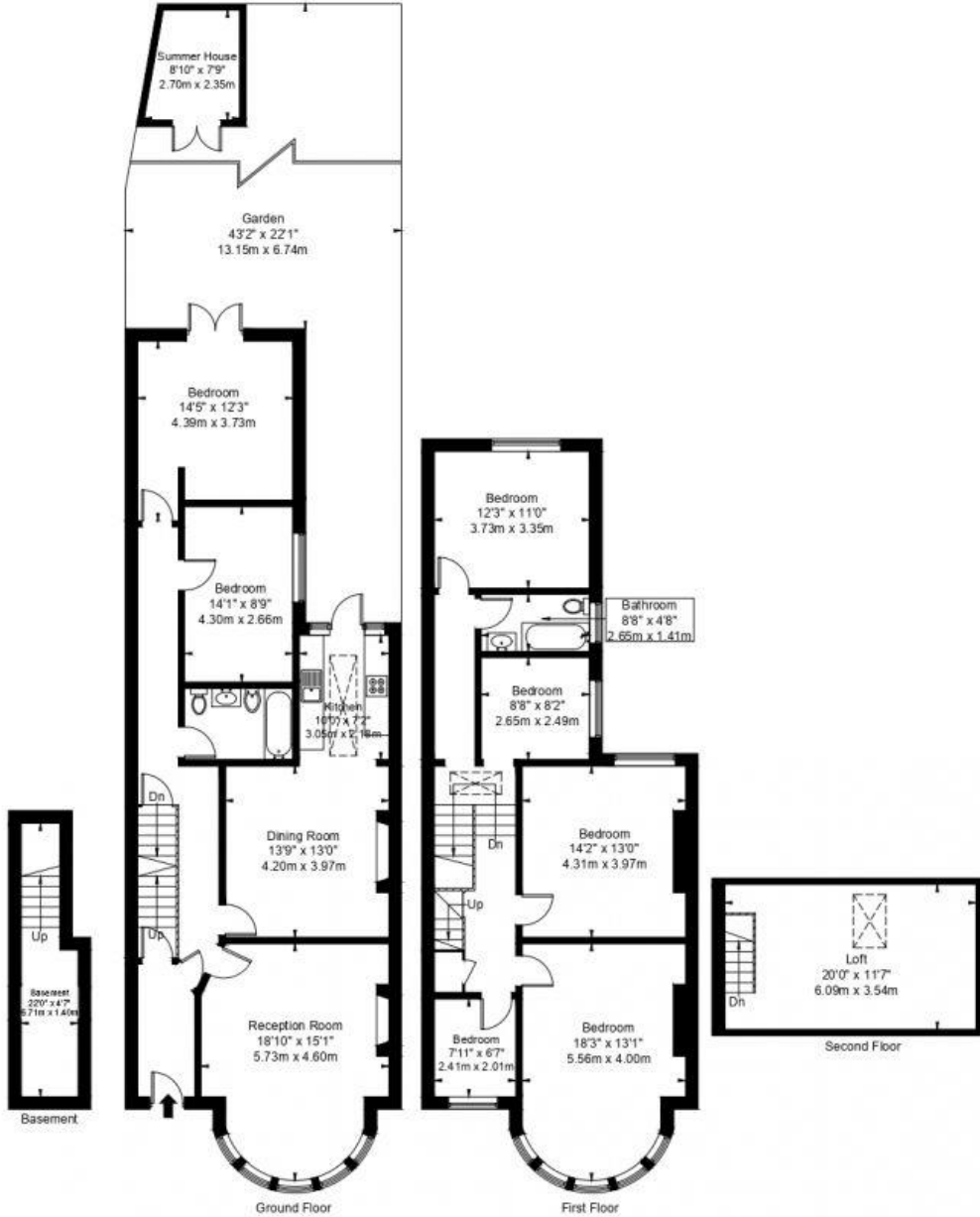
- Large Family Home (3 Floors)
- Stylish Fireplace/Bay Windows
- Wooden Flooring
- Close to Schools/Amenities
- Five Bedroom/Two Bathrooms
- Beautiful Original Features
- Mature Rear 93 Ft Garden
- Close to Jubilee/Thameslink

# Heber Road NW2 6AA

Approx. Gross Internal Area = 217.3 sq m / 2339 sq ft

Summer House = 5.7 sq m / 61 sq ft

Total = 223 sq m / 2400 sq ft



Ref

Copyright

**BLEU  
PLAN**

The Floor plan is not to scale and measurements and areas shown are approximate and therefore should be used for illustrative purposes only. The plan has been prepared in accordance with the RICS code of Measuring Practice and whilst we have confidence in the information produced it must not be relied on. If there is any aspect of particular importance, you should carry out or commission your own inspection of the property.

Copyright @ BLEUPLAN