



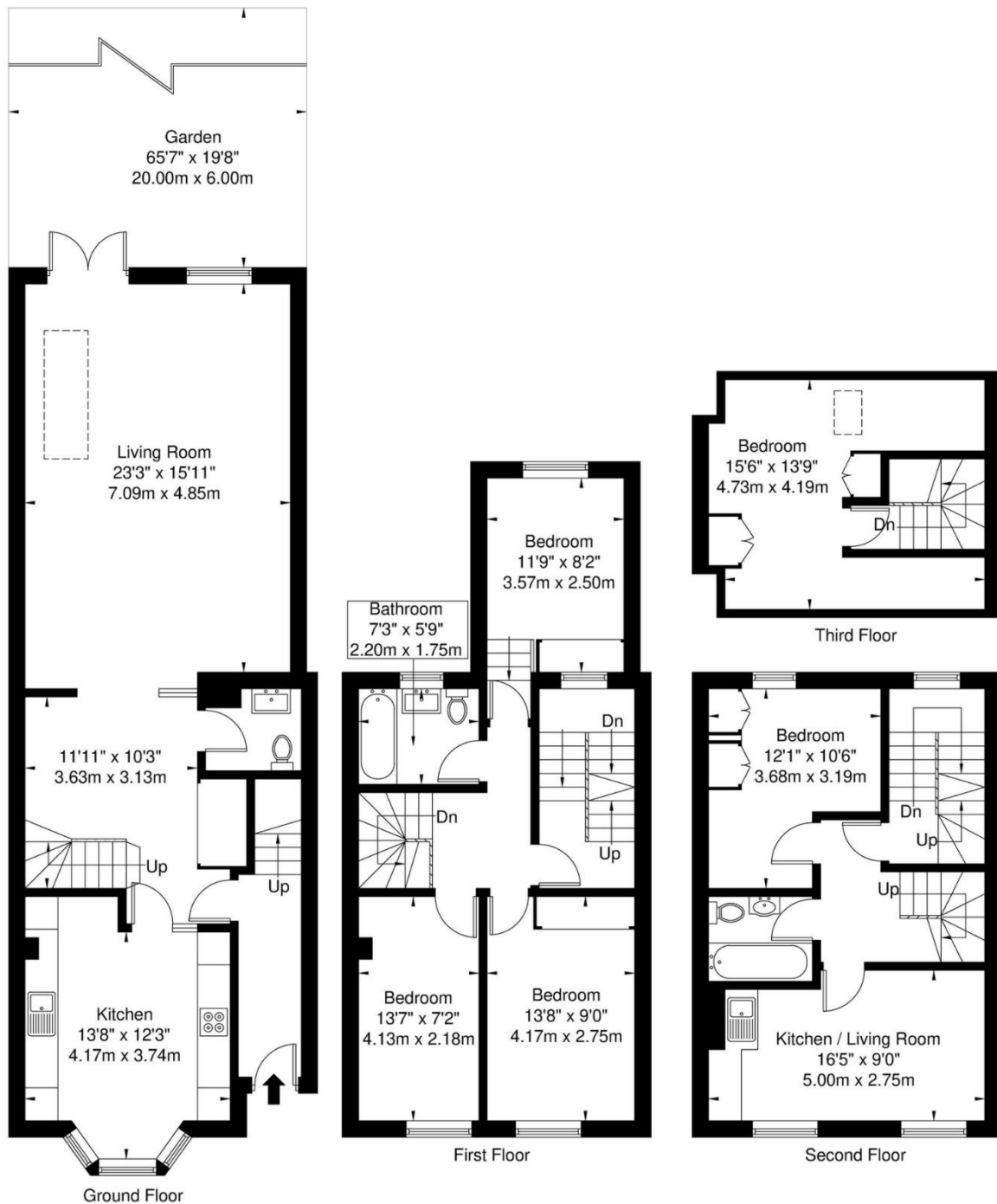
Loveridge Road, Kilburn, NW6

£1,350,000 Asking Price

- 5 Bedroom House
- 4 Floors
- Close to West Hampstead
- Rear Extension/Loft
- Private Garden
- Close to Schools

Loveridge Road, NW6 2DT

Approx. Gross Internal Area = 185.9 sq m / 2001 sq ft



Ref

Copyright

**BLEU
PLAN**

The Floor plan is not to scale and measurements and areas shown are approximate and therefore should be used for illustrative purposes only. The plan has been prepared in accordance with the RICS code of Measuring Practice and whilst we have confidence in the information produced it must not be relied on. If there is any aspect of particular importance, you should carry out or commission your own inspection of the property.

Copyright @ BLEUPLAN