



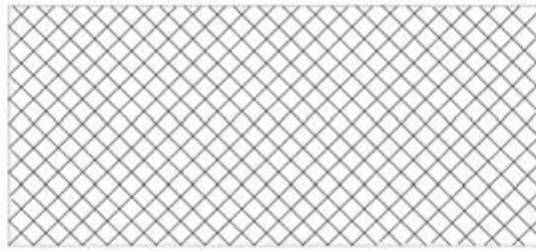
MAPESBURY
ESTATE AGENTS



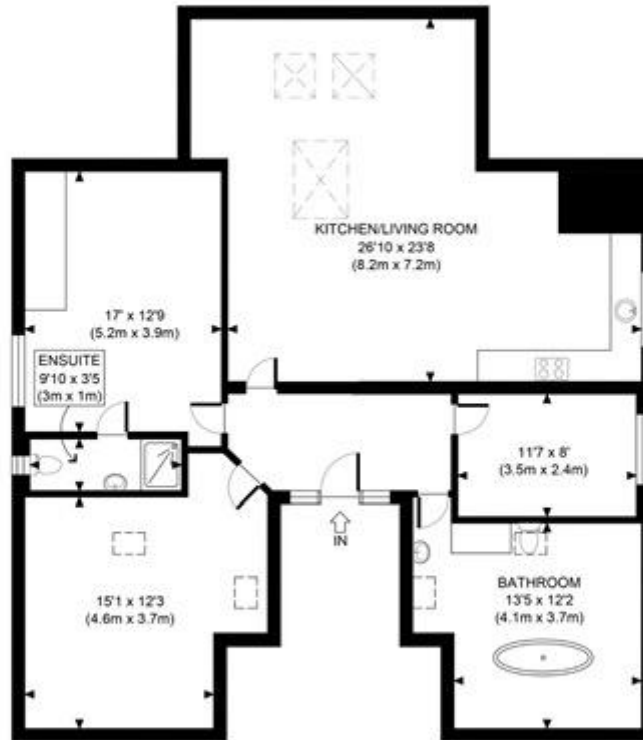
Delmore House, Brondesbury Park, NW6

£681 per week

- 3 Bed Top Floor Flat
- Modern Kitchen
- Communal Gardens
- Close to Jubilee/Overground
- En-Suite Bathroom
- Underfloor Heating
- Gas Central Heating
- Close to Gym



GROUND FLOOR SHARED GARDEN FOR 3,4 & 5



SECOND FLOOR
GROSS INTERNAL
FLOOR AREA 1450 SQ FT

APPROX. GROSS INTERNAL FLOOR AREA 1450 SQ FT / 135 SQM

Ref: Copyright **photoplan**

Disclaimer: Floor plan measurements are approximate and are for illustrative purposes only. While we do not doubt the floor plan accuracy and completeness, you or your advisors should conduct a careful, independent investigation of the property in respect of monetary valuation