



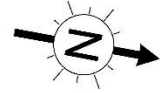
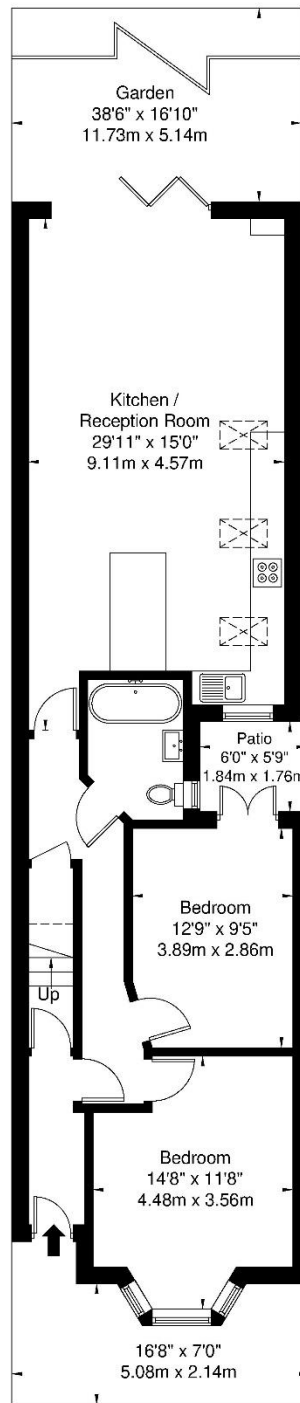
Lechmere Rd, Willesden, NW2

£650,000 Share of Freehold

- Luxury New Home
- Bi-Fold Doors
- Smeg Appliances
- Sash-Windows
- 2 Bed/2 Bath
- Stylish Interiors
- Wooden Flooring
- Private Garden

Lechmere Road, NW2 5BU

Approx. Gross Internal Area = 82.3 sq m / 885 sq ft



Ref

Copyright

**B L E U
P L A N**

The Floor plan is not to scale and measurements and areas shown are approximate and therefore should be used for illustrative purposes only. The plan has been prepared in accordance with the RICS code of Measuring Practice and whilst we have confidence in the information produced it must not be relied on. If there is any aspect of particular importance, you should carry out or commission your own inspection of the property.

Copyright @ BLEUPLAN