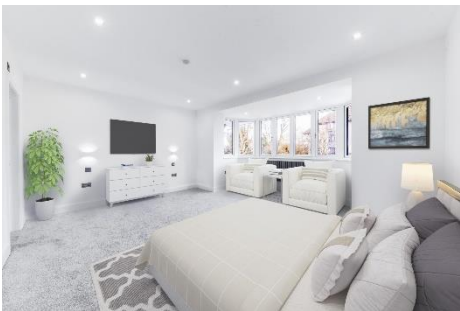




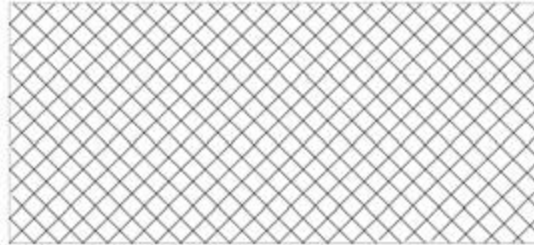
**MAPESBURY**  
ESTATE AGENTS



**Delmore House, Brondesbury Park, NW6**

**£575 per week**

- 2 Bedroom First Floor
- Fitted Kitchen/Living Room
- Shared Garden
- Near Kilburn Jubilee Line
- Ensuite Bathroom
- Underfloor Heating
- GCH/Double Glazing
- Allocated Parking Space



GROUND FLOOR SHARED GARDEN FOR 3, 4 & 5



FIRST FLOOR  
GROSS INTERNAL  
FLOOR AREA 823 SQ FT

APPROX. GROSS INTERNAL FLOOR AREA 823 SQ FT / 76 SQM  
Ref: Copyright **photoplan**

Disclaimer: Floor plan measurements are approximate and are for illustrative purposes only. While we do not doubt the floor plan accuracy and completeness, you or your advisors should conduct a careful, independent investigation of the property in respect of monetary valuation.