



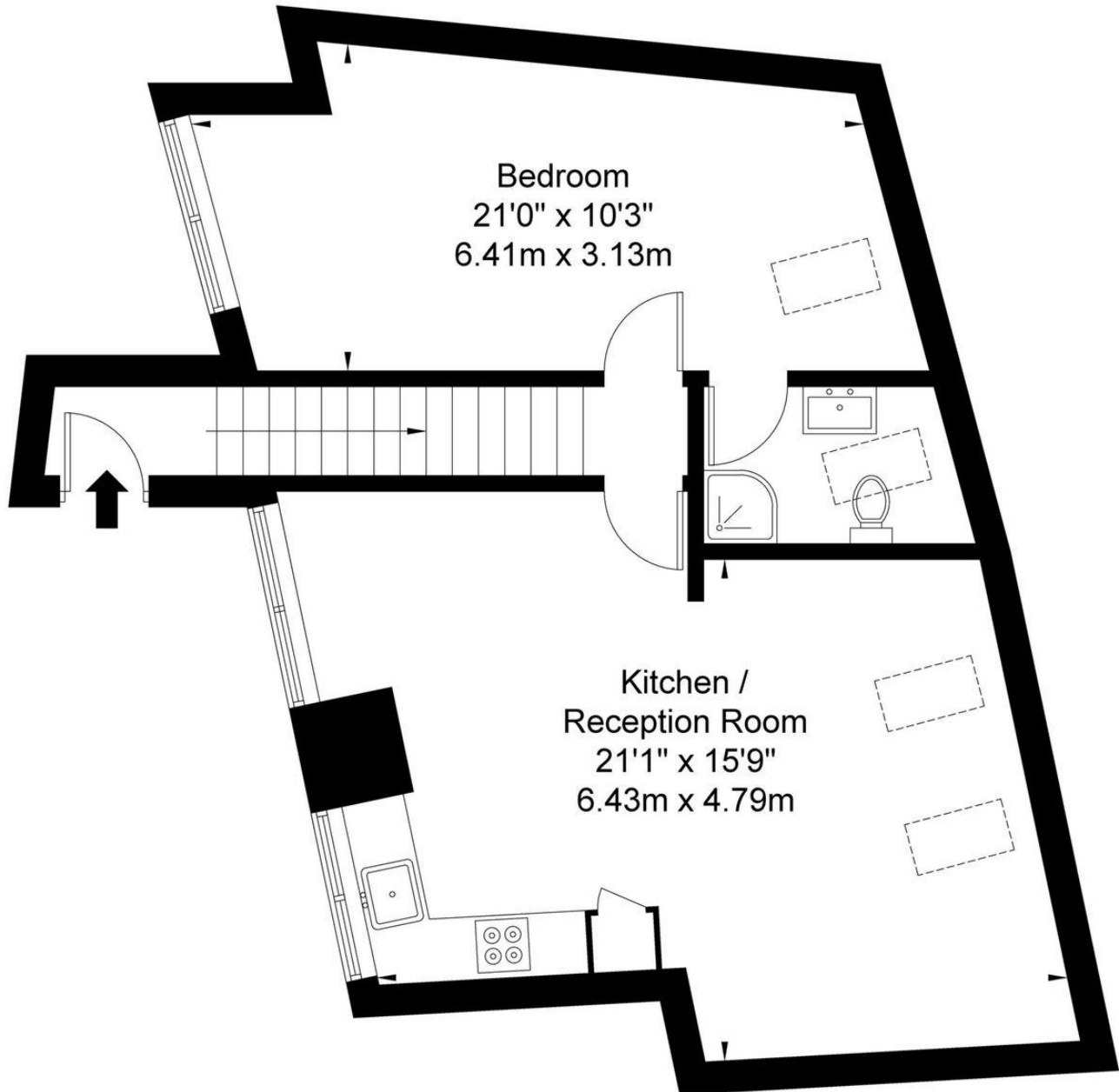
Bushey Grove Road, Bushey, WD23

£335 per week

- One Bedroom Flat
- Fully Fitted Kitchen
- Access to M1/Overground Trains
- Energy Efficient (Rating C)
- Part of Modern Building
- Newly Tiled Bathroom
- Sash Double-Glazed Windows
- Ideal for Professionals

Bushy Grove Road WD23 2JW

Approx. Gross Internal Area = 60.3 sq m / 649 sq ft



Ref

Copyright **BLEU
PLAN**

The Floor plan is not to scale and measurements and areas shown are approximate and therefore should be used for illustrative purposes only. The plan has been prepared in accordance with the RICS code of Measuring Practice and whilst we have confidence in the information produced it must not be relied on. If there is any aspect of particular importance, you should carry out or commission your own inspection of the property.

Copyright @ BLEUPLAN