



Monarch Apartments, Willesden, NW10

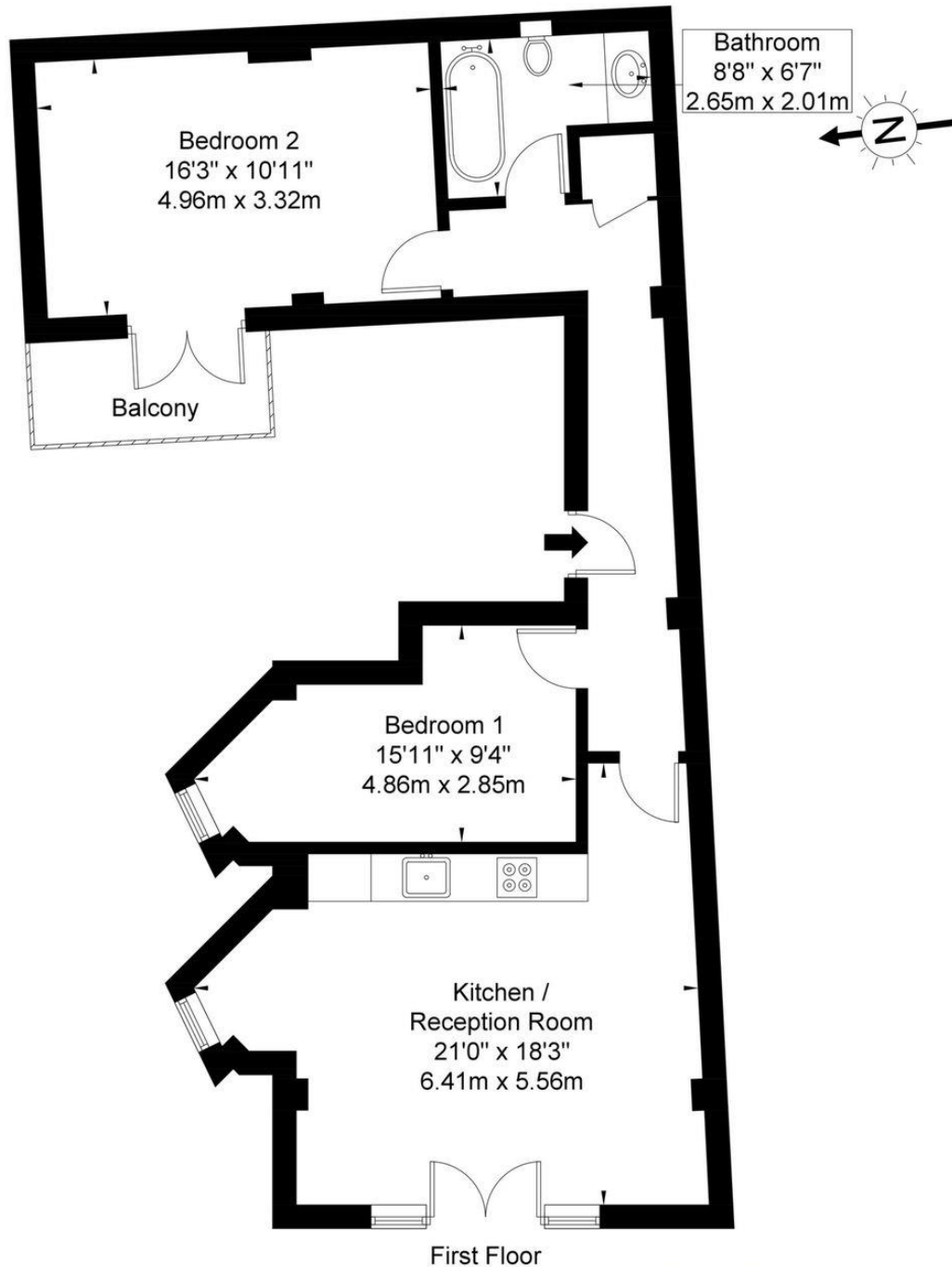
£543 per week

- Modern Newbuild
- First Floor Flat
- Gated Development
- High Spec Finish
- 2 Bed|1 Bath
- Private Balcony
- Underfloor Heating
- Size: 741 Sq Ft

Monarch Apartments, High Road, NW10 2SD

Approx. Gross Internal Area = 68.9 sq m / 741 sq ft

Approx. Gross External Area = 3.9 sq m / 41 sq ft



Ref

Copyright

**BLEU
PLAN**

The Floor plan is not to scale and measurements and areas shown are approximate and therefore should be used for illustrative purposes only. The plan has been prepared in accordance with the RICS code of Measuring Practice and whilst we have confidence in the information produced it must not be relied on. If there is any aspect of particular importance, you should carry out or commission your own inspection of the property.

Copyright @ BLEUPLAN