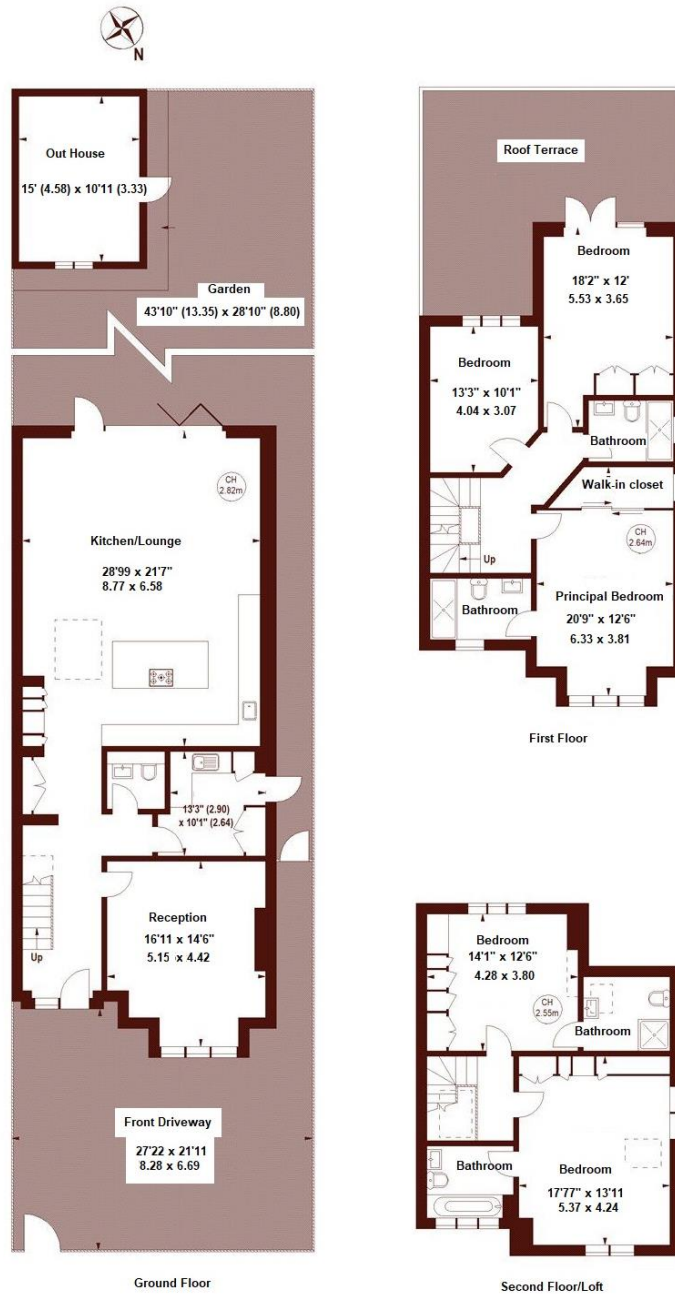




Park Avenue, Willesden Green, NW2

£2,250,000 Freehold

- Luxury New Home
- 5 Bed|4 Bath|2 Rec
- Extended with Loft
- 3 Ensuite Baths
- 43" Garden (SW)
- Gated Driveway
- Close to Jubilee
- Over 2500 Sq Ft



Park Avenue Willesden Green London NW2 5AP

Gross Internal Area: 2544 Ft² (236.34 M²)

Out House: 166 Ft² (15.41 M²)