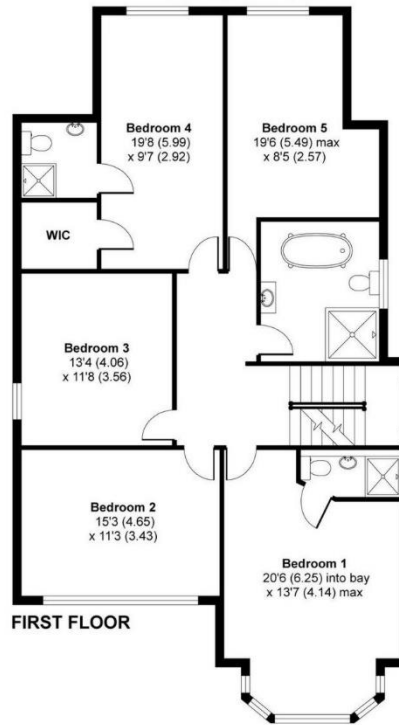
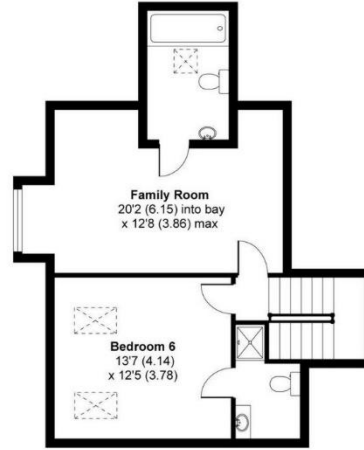
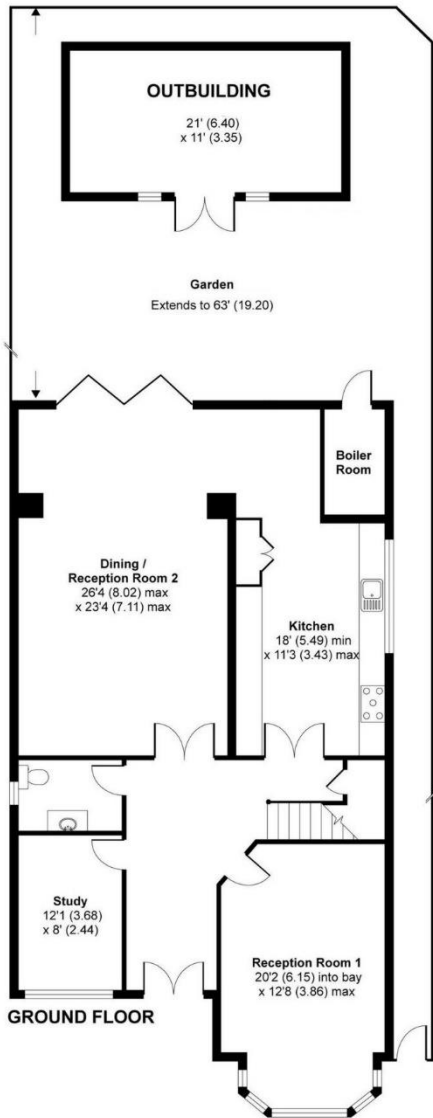




Brondesbury Park, Brondesbury, NW6 £3,900,000 Freehold

- Detached House
- 7 Bed|5 Bath|3 Rec
- Gated Driveway
- Moments to Jubilee Line
- Modern New Build
- Prime Location
- Close to Amenities
- Close to Schools



Brondesbury Park, London, NW6

Approx. Gross Internal Floor Area: 3235 SQ FT / 300.5 SQ M Excluding Out House

Approx. Gross Internal Floor Area: 3466 SQ FT / 322 SQ M Including Out House