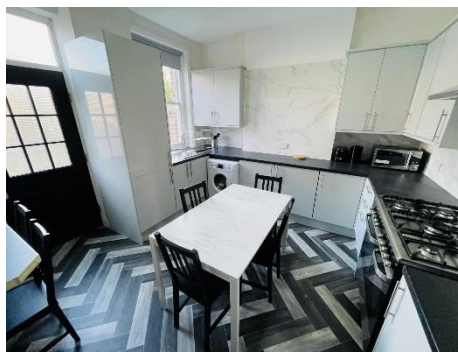




MAPESBURY
ESTATE AGENTS



Kings Road, Willesden Green, NW10

£1,295,000 Must Be Seen

- Double Fronted|Detached
- Quiet Residential Street
- Potential to Extend
- Development Potential
- Rare Victorian House
- Private Garden/Garage
- Potential to convert Loft
- Close to Schools

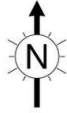
Kings Road NW10 2BN

Approx. Gross Internal Area = 146.9 sq m / 1581 sq ft

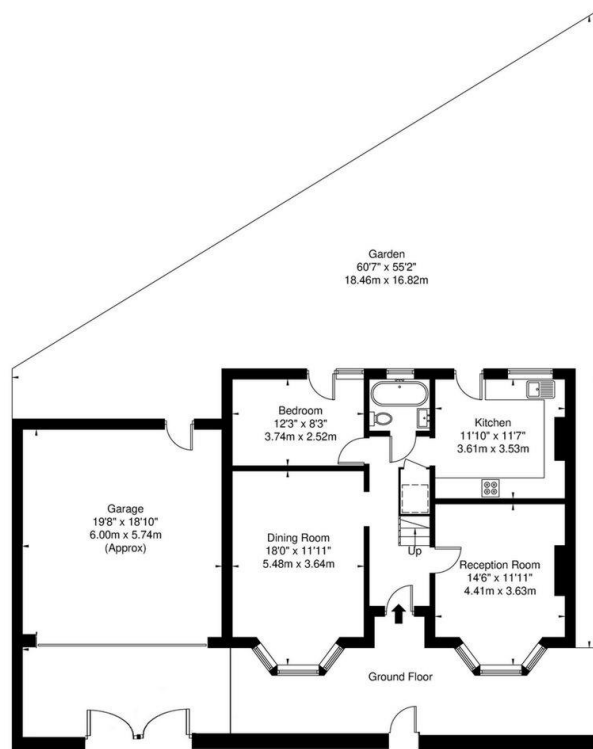
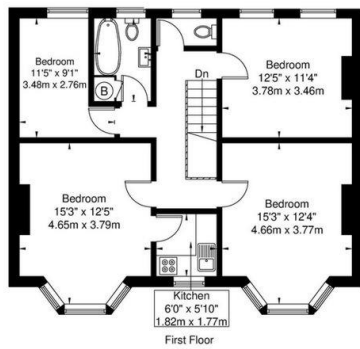
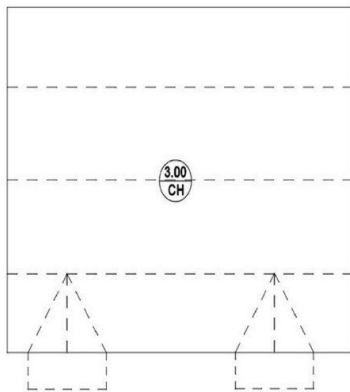
Garage = 34.5 sq m / 371 sq ft

Loft = 38.8 sq m / 417 sq ft

Total = 181.4 sq m / 1952 sq ft



NO ACCESS TO LOFT HEIGHT TAKEN
THROUGH LOFT HATCH



The Floor plan is not to scale and measurements and areas shown are approximate and therefore should be used for illustrative purposes only. The plan has been prepared in accordance with the RICS code of Measuring Practice and whilst we have confidence in the information produced it must not be relied on. If there is any aspect of particular importance, you should carry out or commission your own inspection of the property.