

# MAPESBURY



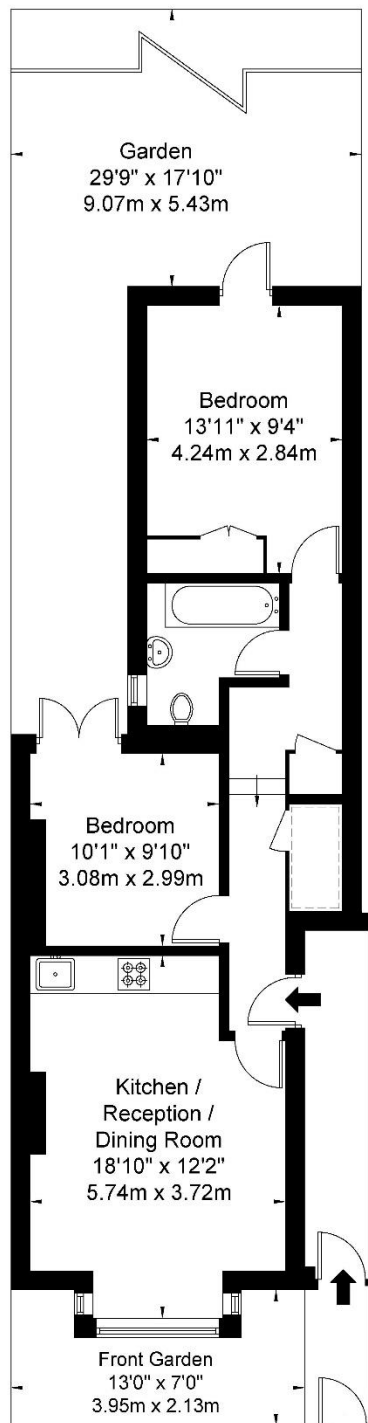
**Lechmere Road, Willesden Green, NW2**

**£474,950**

- 2 Bedroom Flat
- Private Garden
- Ready to Move in!
- Close to Tube (Jubilee)
- Wooden Floors
- High Ceilings/Bay Windows
- Quiet Cul-De-Sac
- Leasehold

# Lechmere Road NW2 5DA

Approx Gross Internal Area = 59 sq m / 635 sq ft



Ground Floor

Ref

Copyright

**BLEU  
PLAN**

The Floor plan is not to scale and measurements and areas shown are approximate and therefore should be used for illustrative purposes only. The plan has been prepared in accordance with the RICS code of Measuring Practice and whilst we have confidence in the information produced it must not be relied on. If there is any aspect of particular importance, you should carry out or commission your own inspection of the property.

Copyright @ BLEUPLAN