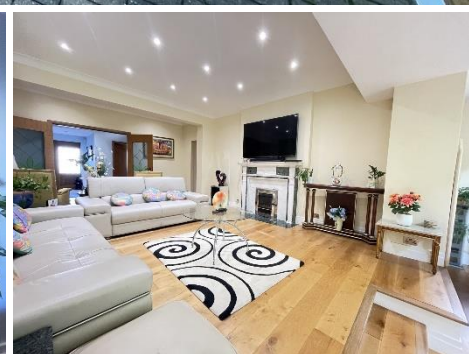
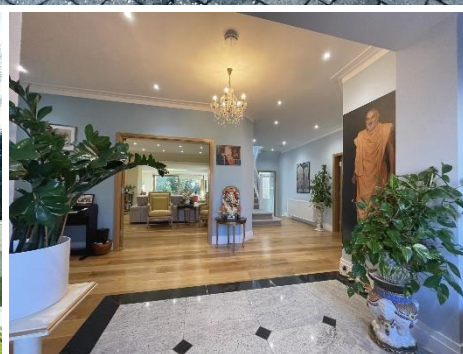


MAPESBURY



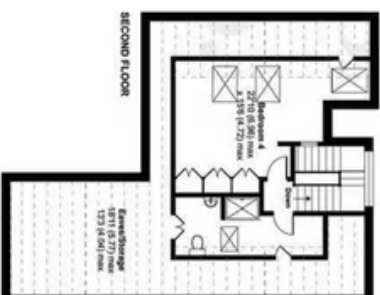
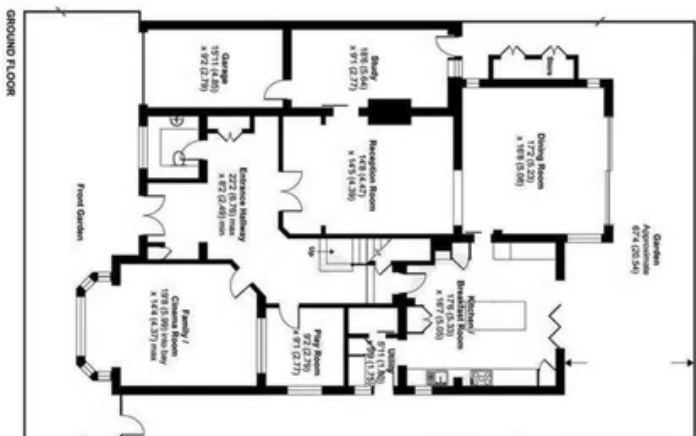
Manor House Drive, Brondesbury Park, NW6 **£3,950,000 OIEO**

- Ambassadorial Home
- Private Driveway
- Detached Gated
- 3 Floors with Loft
- 5 Bed|4 Bath|4 Rec
- Bullet Proof Windows
- Private Terraces
- Freehold

Manor House Drive, Brondesbury Park, London NW6



Denotes restricted head height



Approximate Area = 3684 Sq Ft (342 Sq M) excl. store
 Limited Use Area(s) = 609 Sq Ft (56.5 Sq M)
 Garage = 145 Sq Ft (13.4 Sq M)
 Total = 4438 Sq Ft (412.3 Sq M)
 Balconies = 603 Sq Ft (56 Sq M)