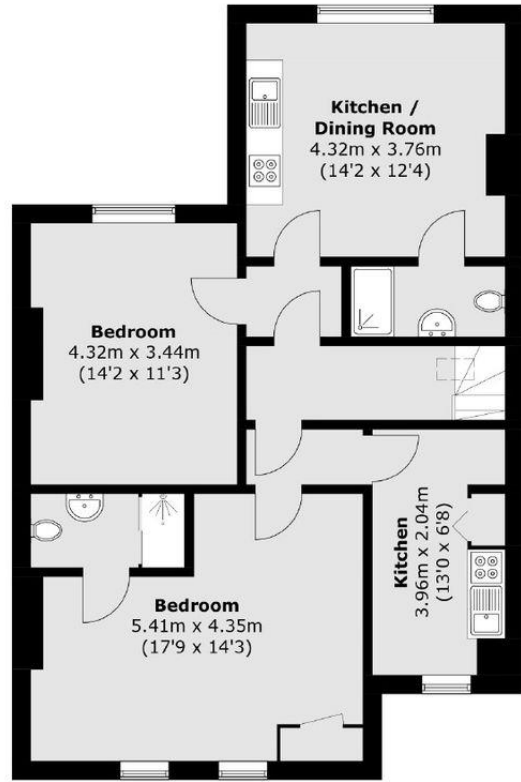




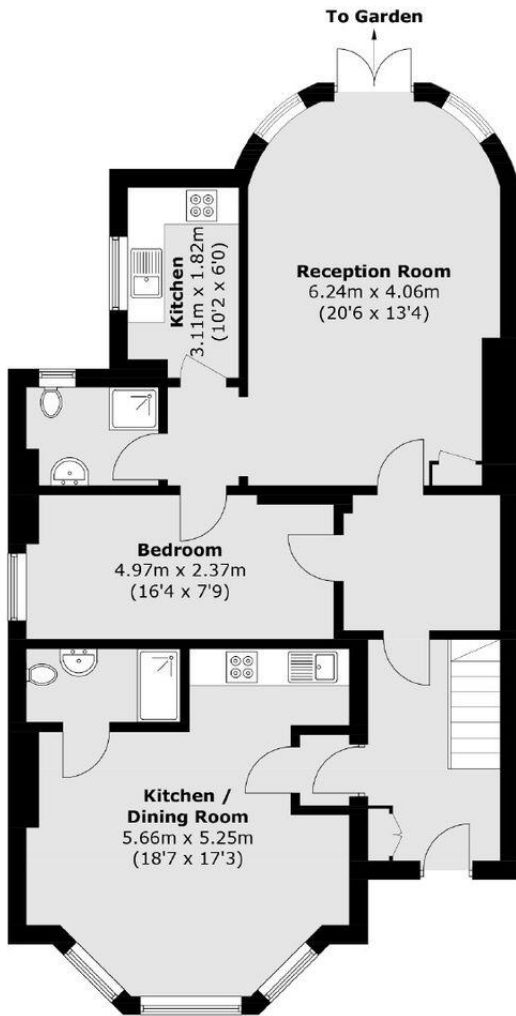
Grove Road, Willesden Green, NW2

£1,700,000

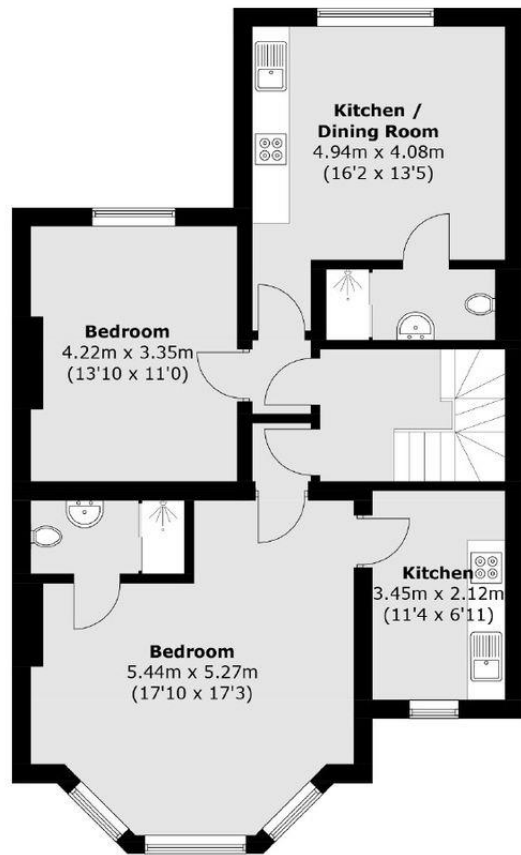
- Freehold Semi Detached
- Potential to Extend (STPP)
- Off Street Parking
- Side Land
- Three Storey
- Investment Opportunity
- Producing over £90K PA.
- Freehold



Second Floor



Ground Floor



First Floor

Total area (approx.): 252.4 sq. m (2,716.8 sq. ft)