

# MAPESBURY

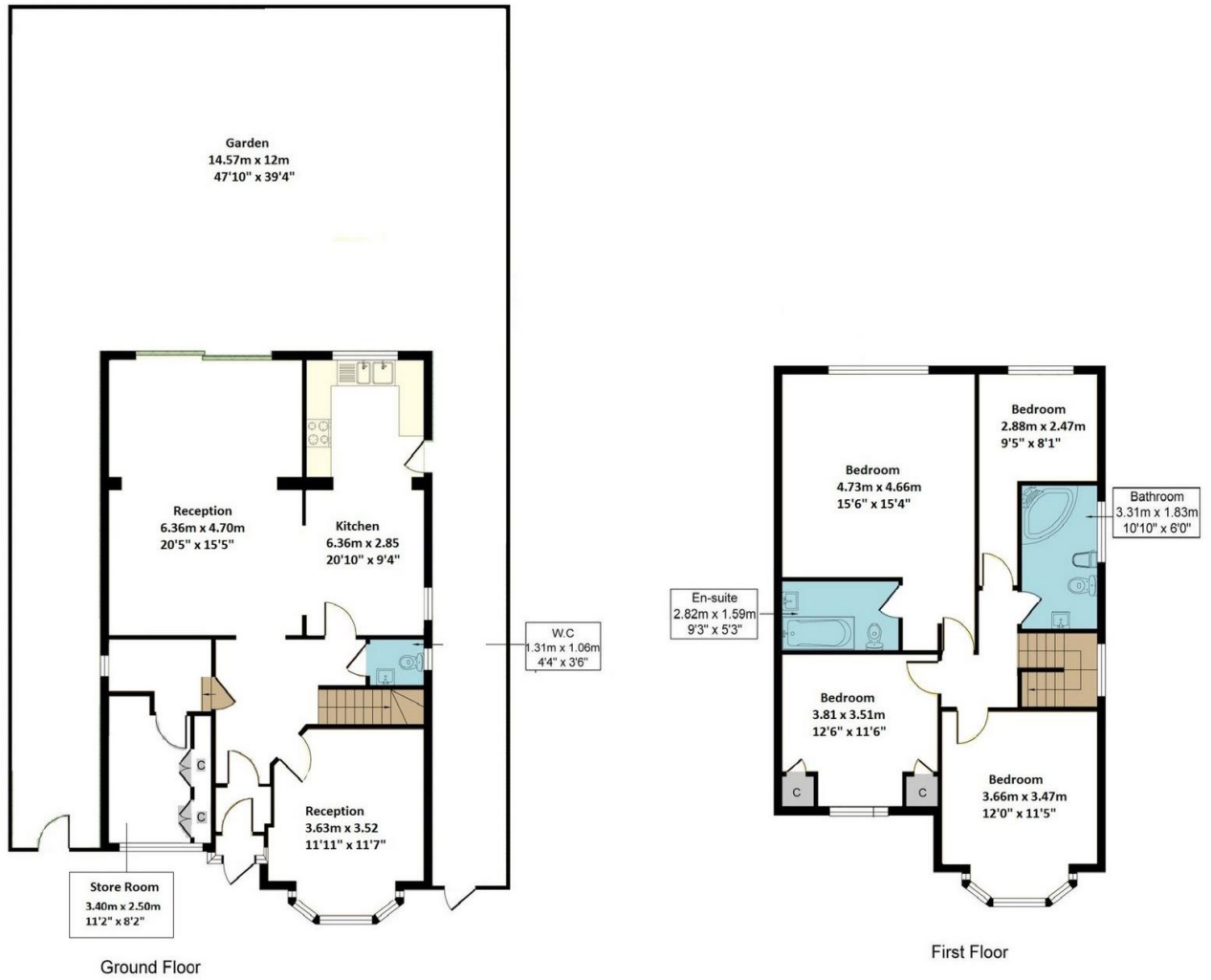


**Salmon Street, Wembley, NW9**

**£1,000,000 OIEO**

- Detached House
- 47' Garden
- Premier Street
- Potential to Extend
- Private Driveway
- 4 Bed / 3 Bath
- Needs Modernisation
- Freehold

# Salmon Street, London, NW9



Approx. Gross Internal Area: 1871 Sq Ft / 173.82 Sq M