

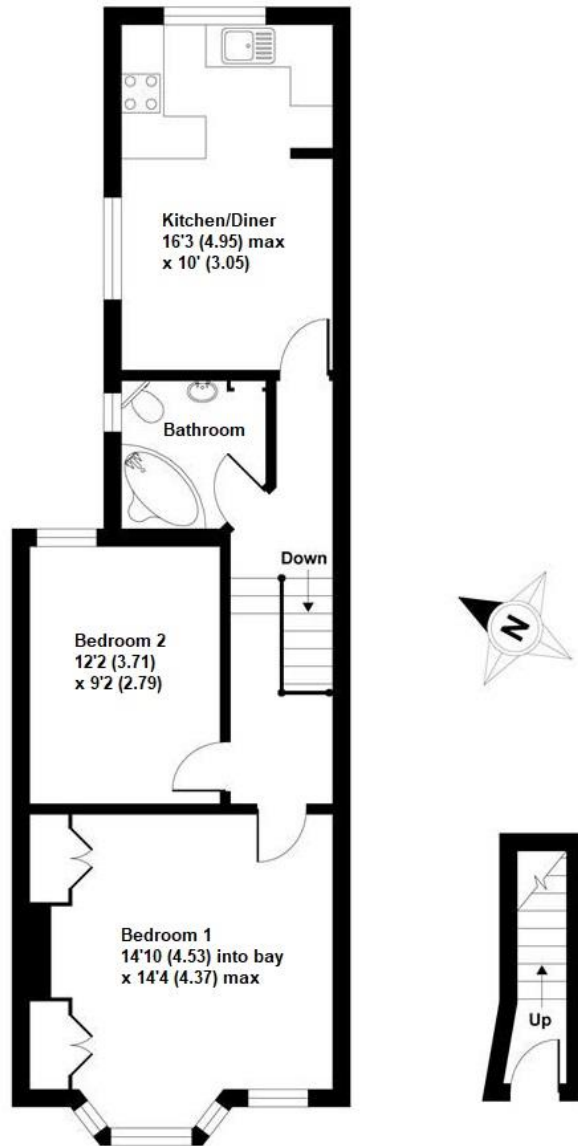
MAPESBURY



Lechmere Road, Willesden Green, NW2

£399,950

- 2 bed|1 Bath
- Top Floor
- Victorian Flat
- Wooden Floors
- Bay Windows
- Chain-Free
- Close to Tube
- Leasehold



Lechmere Road Willesden Green London NW2 5DA

Size: 651 Sq Ft (60.5 Sq M) Approx.