

MAPESBURY



Mora Road, Cricklewood, NW2

£799,950 Keen to Sell

- Victorian Terraced
- Potential to extend STP
- 3 Bed|3 Rec|2 Bath
- Bay Windows
- Private Patio
- High Ceilings
- Close to Schools
- Freehold

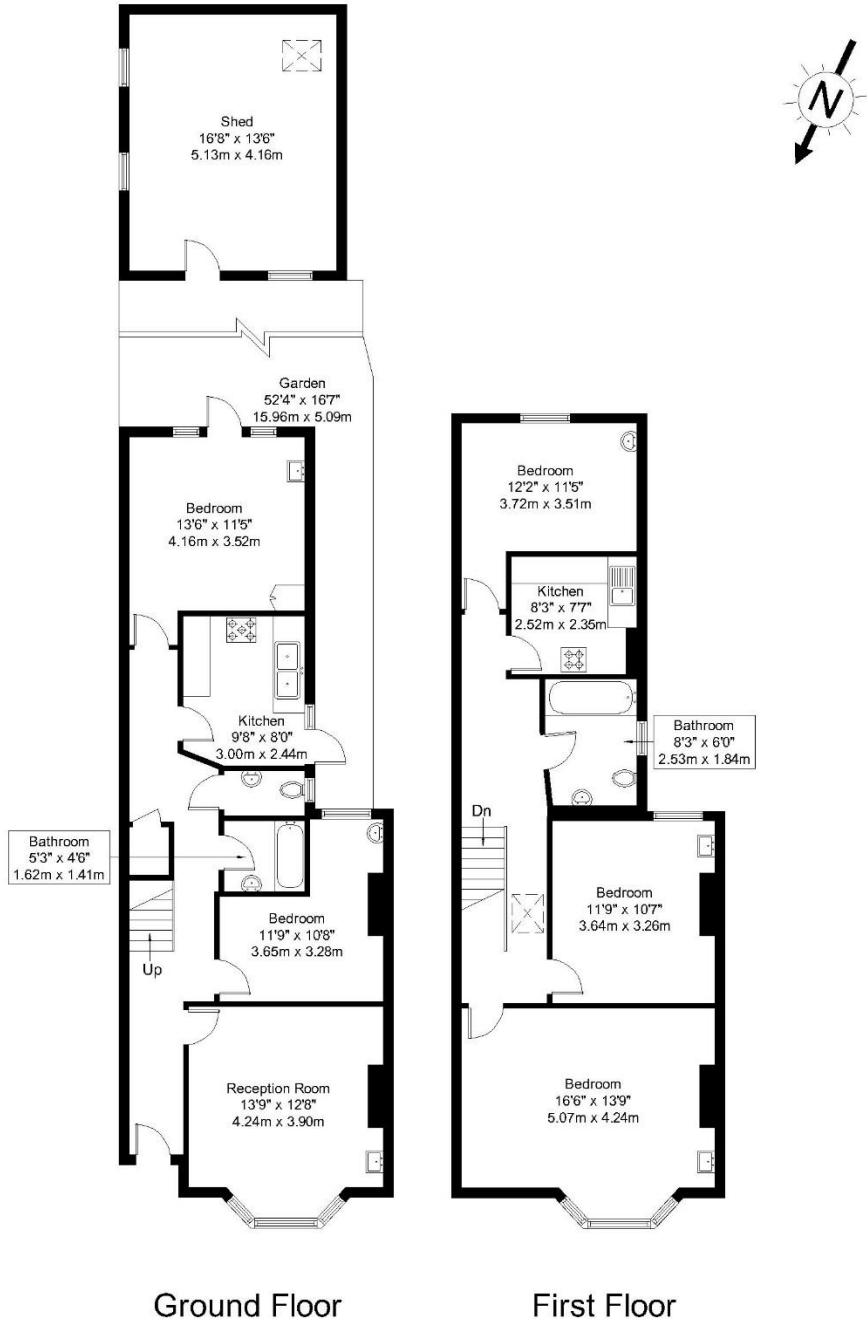
Mora Road, NW2 6SD

Approx Gross Internal Area = 131.1 sq m / 1411 sq ft

Shed = 21.3 sq m / 229 sq ft

Garden = 49.8 sq m / 536 sq ft

Total = 202.2 sq m / 2176 sq ft



Ref:

Copyright **BLEU
PLAN**

The Floor plan is not to scale and measurements and areas shown are approximate and therefore should be used for illustrative purposes only. The plan has been prepared in accordance with the RICS code of Measuring Practice and whilst we have confidence in the information produced it must not be relied on. Maximum lengths and widths are represented on the floor plan. If there is any aspect of particular importance, you should carry out or commission your own inspection of the property.

Copyright @ BLEUPLAN